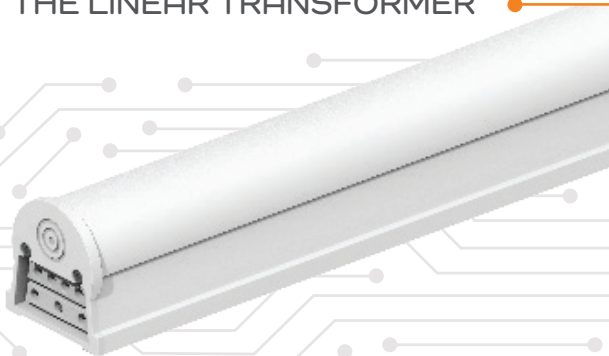


## Perfect LED solution for

- Linear & General Purpose
- Strips & Wraps
- Troffers
- Vapor Tights
- Low Bay & High Bay
- Coves & Soffits
- Stairwells

# LED LBI Pro

THE LINEAR TRANSFORMER



[led-llc.com/lbi](http://led-llc.com/lbi)

use as a  
Retrofit Kit  
or Fixture

**LIGHT EFFICIENT DESIGN**

847.380.3540 • [led-llc.com](http://led-llc.com)



**Light Efficient Design**

**RemPhos**

# LED LBI Pro

THE LINEAR TRANSFORMER

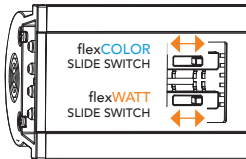
available in  
2', 3' & 4'

flex:COLOR

3 color temperatures

flex:WATT

3 wattages



flex:CONTROL

order with advanced,  
basic or no controls

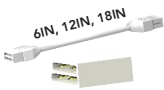
10  
YEAR  
WARRANTY



connect up to 40 LBI  
together from one power feed

the ultimate in flexibility

## CONNECTORS & CONTROLS



### LINKING CABLES & SEAMLESS CONNECTORS

Easily connect the power and control wires from one LBI to another.



### OC2 SENSOR KIT

Tri-Level, remote controllable high frequency motion and daylight sensor designed to easily integrate with the LBI bars.



### EMERGENCY DRIVER (EMG-H SERIES)

Emergency solution for LBI. It allows the LBI to be used for normal and emergency operation.



### 4.7IN SPACER CONNECTOR

Use the 4.7in spacer connector to bring the length of the bar system to a standard dimension.

## MOUNTING ACCESSORIES



### SURFACE MOUNT MAGNETIC CLIP

The most universal method for attaching the LBI to a wall, ceiling, or fixture. *2 clips are included in each LBI kit.*



### SUSPENDED IN-LINE BRACKET KIT

Fastens over the junction of 2 LBI to keep them straight in-line and provides mounting points for common suspension methods.



### UP/DOWN CLIP

Use the Up/Down clip with our suspended in-line kit to clip a shorter LBI to provide up-light.



### BLADE CLIP

Designed for fixtures that have thin sheet metal or plastic film reflectors commonly found on high bays.



### 45 DEGREE BRACKET/CLIP

Holds the LBI at 45 degrees to better distribute the light in the desired direction.

for more information visit [led-llc.com/lbi](http://led-llc.com/lbi)