



Light Efficient Design



Light Efficient Design

SCREW-IN RETROFITS + PIN-BASE RETROFITS + WORK LIGHTS



RemPhos

Solera

LumiCleanse

RETROFIT KITS + FIXTURES

SOLAR LIGHTS

DISINFECTION LIGHTS



o led-llc.com o

2020 Q4 EDITION

Join us...

pro workshop webinar

Stay up to date with our latest product offerings, company and industry news!

Contact Rebecca Healy for details rhealy@led-llc.com



Table of Contents

Introduction to Light Efficient Design.....	2-3
Accessories.....	2
Screw-In Retrofits	
Shoe Box / Wall Pack.....	4-5
High Bay.....	6-7
Low Bay.....	8
Recessed Can.....	9
Post Top.....	10-11
Bollard.....	12-13
SOX.....	14
Hazardous Location.....	15
Pin-Base Retrofits	
PL.....	16-17
T8.....	18-19
Retrofit Kits	
LED Fixtures	
LumiCleanse	
Work Lights	
Solar Lights	
Light Efficient Design Representatives.....	32

ACCESSORIES SPECIFICATIONS

DESCRIPTION	MODEL #	TYPE	ENCLOSURE	NOMINAL DISCHARGE CURRENT	STRIKE RATING	DIMENSIONS
SURGE ARRESTORS	SPD-277P-10KA-EC-1	10kA surge arrester, 120-277V, series with thermal fuse, 5 year limited manufacturer's warranty	Round IP65	10,000A	1@10kA 2@6.5kA 15@3kA 110@1.5kA	2.5" x 1.4"
	SPD-347P-10KA	10kA surge arrester, 120-347V, series with thermal fuse, 5 year limited manufacturer's warranty	Round IP67			

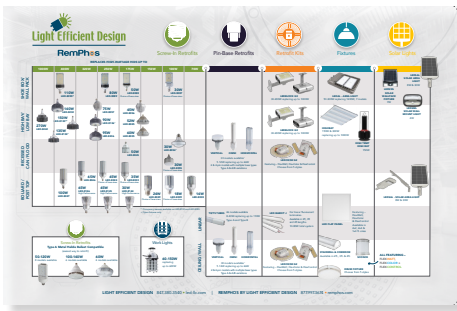
DESCRIPTION	MODEL #	TYPE	MAX WATTAGE	INPUT/OUTPUT VOLTAGE	THD	POWER FACTOR	DIMENSIONS
STEP DOWN TRANSFORMERS	MTM04506224C-LW	450VA Stepdown transformer	400W	480/347V in 277V out	3.4% 3.8%	0.99	4.2" x 2.7" x 2.2"
	MTM01606224C-LW	160VA Stepdown transformer	140W	480/347V in 277V out	4.3% 4.1%	0.99	4.2" x 2.0" x 1.6"
	MTM00506224C-LW	50VA Stepdown transformer	45W	480/347V in 240V out	6.2% 6.7%	0.98 0.97	3.0" x 1.7" x 1.4"

Sample Program

Try our LED retrofits in your project with no risk. Sample quantities* are available with 60-day terms, and can be returned in original cartons within 60 days. No restocking fee, no questions asked. That's our "try before rollout" guarantee!

* Up to 4 pieces

COUNTER MAT / SELECTOR GUIDE



FLEXCOLOR BOLLARDS 2' X 4' BANNER



GONDOLAS



←
LED-9902
SCREW-IN
RETROFIT
2' GONDOLA
(24" x 14" x 78")

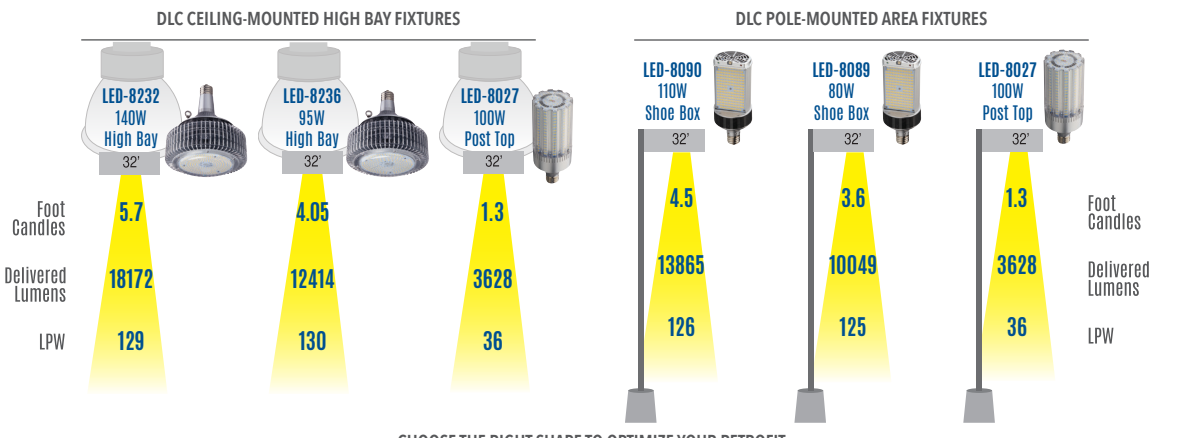
LED-9903
SCREW-IN
RETROFIT
3' GONDOLA
(36" x 14" x 78")

→
SOLERA SOLAR
2' GONDOLA
(24" x 14" x 78")

PRODUCT DISPLAYS



LIGHT DISTRIBUTION / FOOT CANDLE COMPARISON



CHOOSE THE RIGHT SHAPE TO OPTIMIZE YOUR RETROFIT

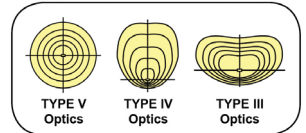
SHOE BOX / WALL PACK



Ballast Bypass—Internal Driver

TYPE B

- ▶ All models rotate easily once secured tightly in sockets
- ▶ Pinpoint directional light so no lumens are lost in the box



All models have Type V optics unless otherwise noted



Models 8089 thru 8091 have support feet

Ballast Compatible—Plug 'n Play

TYPE A

- ▶ Compatible with pulse or probe start magnetic metal halide ballasts
- ▶ Easiest to install—simply screw into existing socket



SHOE BOX / WALL PACK



SPECIFICATIONS

Ballast Bypass | TYPE B

DESCRIPTION	120-277V	347V	LUMENS	REPLACES	LED POWER	BASE	CCT	UL LISTED	CLASSIFIED	DIMENSIONS
LED-8086E G4 30W	LED-8086E30-G4	LED-8086E30C-G4	2800	70W	20W	E26 Edison	3000K	✓	✓	5.5" x 3"
	LED-8086E40-G4	LED-8086E40C-G4	2800				4000K	✓	✓	
	LED-8086E50-G4	LED-8086E50C-G4	2880				5000K	✓	✓	
LED-8087E G4 30W	LED-8087E30-G4		3534	100W	30W	E26 Edison	3000K	✓	✓	5.5" x 3"
	LED-8087E40-G4	LED-8087E40C-A	4260				4000K	✓	✓	
	LED-8087E57-G4	LED-8087E57C-A	4255				5000K	✓	✓	
LED-8087M G4 30W	LED-8087M30-G4		3534	100W	30W	E39 Mogul	3000K	✓	✓	6.7" x 3"
	LED-8087M40-G4	LED-8087M40C-A	4260				4000K	✓	✓	
	LED-8087M57-G4	LED-8087M57C-A	4255				5000K	✓	✓	
LED-8088E G4 50W	LED-8088E30-G4	LED-8088E30C-G4	6915	175W	50W	E26 Edison	3000K	✓	✓	7.9" x 3.8"
	LED-8088E40-G4	LED-8088E40C-G4	6460				4000K	✓	✓	
	LED-8088E50-G4	LED-8088E50C-G4	7250				5000K	✓	✓	
LED-8088M G4 50W	LED-8088M30-G4	LED-8088M30C-G4	6915	175W	50W	EX39 Mogul	3000K	✓	✓	8.5" x 3.8"
	LED-8088M40-G4	LED-8088M40C-G4	6460				4000K	✓	✓	
	LED-8088M50-G4	LED-8088M50C-G4	7250				5000K	✓	✓	
LED-8089M G5 80W	LED-8089M30-G5	LED-8089M30C-G5	10670	250W	80W	EX39 Mogul	3000K	✓	✓	8.3" x 4.3"
	LED-8089M40-G5	LED-8089M40C-G5	10760				4000K	✓	✓	
	LED-8089M50-G5	LED-8089M50C-G5	10850				5000K	✓	✓	
LED-8090M G4 110W	LED-8090M30-G4	LED-8090M30C-G4	15745	400W	110W	EX39 Mogul	3000K	✓	✓	11.4" x 4.3"
	LED-8090M40-G4	LED-8090M40C-G4	15430				4000K	✓	✓	
	LED-8090M50-G4	LED-8090M50C-G4	14570				5000K	✓	✓	
LED-8090M G4-T3 110W	LED-8090M40-G4-T3	LED-8090M40C-G4-T3	12630	400W	110W	EX39 Mogul	4000K	✓	✓	11.4" x 4.3"
	LED-8090M50-G4-T3	LED-8090M50C-G4-T3	12840				5000K	✓	✓	
LED-8090M G4-T4 110W	LED-8090M40-G4-T4	LED-8090M40C-G4-T4	12165	400W	110W	EX39 Mogul	4000K	✓	✓	11.4" x 4.3"
	LED-8090M50-G4-T4	LED-8090M50C-G4-T4	12780				5000K	✓	✓	
LED-8090M G4-OCC 110W	LED-8090M40-G4-OCC	LED-8090M40C-G4-OCC	15430	400W	110W	EX39 Mogul	4000K	✓	✓	11.4" x 4.3"
	LED-8090M50-G4-OCC	LED-8090M50C-G4-OCC	14570				5000K	✓	✓	
LED-8090M G4-HV 110W	LED-8090M30-G4-HV		14620	400W	110W	EX39 Mogul	3000K	✓	✓	11.4" x 4.3"
	LED-8090M40-G4-HV		15180				4000K	✓	✓	
	LED-8090M50-G4-HV		15390				5000K	✓	✓	
LED-8091M 320W	LED-8091M30		43090	1000W	320W	EX39 Mogul	3000K	✓	✓	4.5" x 11.2" LED PANEL 8.9" x 12.6"
	LED-8091M40		43380				4000K	✓	✓	
	LED-8091M50		44610				5000K	✓	✓	
LED-8091M HV 320W	LED-8091M30-HV		43090	1000W	320W	EX39 Mogul	3000K	✓	✓	4.5" x 11.2" LED PANEL 8.9" x 12.6"
	LED-8091M40-HV		43380				4000K	✓	✓	
	LED-8091M50-HV		44610				5000K	✓	✓	

>80 CRI • 50,000 HOUR RATED LIFE • 5 YEAR WARRANTY



ON ALL MODELS



Step-down transformers available for 480V applications

see page 2

Ballast Compatible | TYPE A

DESCRIPTION	MODEL #	LUMENS	REPLACES	LED POWER	BASE	CCT	UL LISTED	DIMENSIONS
LED-8088E 50W	LED-8088E40-MHBC	5188	250W	50W	E26 Edison	4000K	✓	7.9" x 3.8"
	LED-8088E57-MHBC	6282				5700K	✓	
LED-8088M 50W	LED-8088M40-MHBC	5188	250W	50W	E39 Mogul	4000K	✓	8.5" x 3.8"
	LED-8088M57-MHBC	6282				5700K	✓	
LED-8089M 80W	LED-8089M40-MHBC	7941	320W	80W	E39 Mogul	4000K	✓	11.4" x 4.3"
	LED-8089M50-MHBC	7635				5000K	✓	
LED-8090M 120W	LED-8090M40-MHBC	9929	400W	120W	E39 Mogul	4000K	✓	11.4" x 4.3"
	LED-8090M50-MHBC	10810				5000K	✓	

VOLTAGE: MH BALLAST ONLY • >80 CRI • 50,000 HOUR RATED LIFE • 5 YEAR WARRANTY

Utility Patent Pending
14/710,301

HIGH BAY

Ballast Bypass—Internal Driver

TYPE
B

OPEN FIXTURE ONLY



90W
LED-8136M

Replaces up to
250W
Mogul base



135W
LED-8132M

Replaces up to
400W
Mogul base



150W
LED-8130M

Replaces up to
400W
Mogul base
Uplight



150W
LED-8130M-OCC

Replaces up to
400W
Mogul base
Uplight



Occupancy Sensor
Remote Included



ENCLOSED FIXTURES



95W
LED-8236M

Replaces up to
250W
Mogul base



140W
LED-8232M

Replaces up to
400W
Mogul base



NEW! **140W**
LED-8232M-HV

Replaces up to
400W
Mogul base
High voltage
277-480V



270W
LED-8242M

Replaces up to
1000W
Mogul base



NEW! **270W**
LED-8242M-HV

Replaces up to
1000W
Mogul base
High voltage
277-480V



Ballast Compatible—Plug 'n Play

TYPE
A

► Compatible with pulse or probe start magnetic metal halide ballasts

► Easiest to install—simply screw into existing socket



100W
LED-8036M-MHBC

Replaces
250W and 320W
Mogul base



140W
LED-8030M-MHBC

Replaces
320W and 400W
Mogul base

Aims light upward,
sideways, and down



140W
LED-8032M-MHBC

Replaces
320W and 400W
Mogul base

Total downlight for
ultra-high ceilings

HIGH BAY



A simple upgrade to your existing high bay fixtures that can be done today!



Retrofits into the most popular high bay fixtures

Ideal for use in:

- Large retail spaces
- Industrial spaces
- Auditoriums
- Gymnasiums
- Warehouses
- Factories

Ballast Bypass TYPE B										
DESCRIPTION	120-277V	347V	LUMENS	REPLACES	LED POWER	BASE	CCT	UL LISTED	CLASSIFIED	DIMENSIONS
Open Fixture Only										
LED-8136M 90W	LED-8136M40	LED-8136M40C	11825	250W	90W	EX39 Mogul	4000K	✓	✓	9.3" x 8.7"
	LED-8136M50	LED-8136M50C	11825				5000K	✓	✓	
LED-8132M 135W	LED-8132M40	LED-8132M40C	17055	400W	135W	EX39 Mogul	4000K	✓	✓	10" x 8.7"
	LED-8132M50	LED-8132M50C	17095				5000K	✓	✓	
LED-8130M 150W	LED-8130M40	LED-8130M40C	19285	400W	150W	EX39 Mogul	4000K	✓	✓	10" x 8.7"
	LED-8130M50	LED-8130M50C	19375				5000K	✓	✓	
LED-8130M OCC 150W	LED-8130M40-OCC	LED-8130M40C-OCC	19285	400W	150W	EX39 Mogul	4000K	✓	✓	10" x 8.7"
	LED-8130M50-OCC	LED-8130M50C-OCC	19375				5000K	✓	✓	
Enclosed Fixture										
LED-8057M 75W	LED-8057M40-A	LED-8057M40C-A	9607	250W	75W	EX39 Mogul	4000K	✓	✓	8.8" x 5.7"
	LED-8057M50-A	LED-8057M50C-A	9236				5000K	✓	✓	
LED-8236M 95W	LED-8236M40	LED-8236M40C	13320	250W	90W	EX39 Mogul	4000K	✓	✓	9.7" x 8.7"
	LED-8236M50	LED-8236M50C	13865				5000K	✓	✓	
LED-8232M 140W	LED-8232M40	LED-8232M40C	18730	400W	140W	EX39 Mogul	4000K	✓	✓	10.5" x 8.7"
	LED-8232M50	LED-8232M50C	19330				5000K	✓	✓	
LED-8232M HV 140W	LED-8232M40		18730	400W	140W	EX39 Mogul	4000K	✓	✓	10.5" x 8.7"
	LED-8232M50		19330				5000K	✓	✓	
LED-8242M 270W	LED-8242M40	LED-8242M40C	34415	1000W	270W	EX39 Mogul	4000K	✓	✓	12.5" x 10.2"
	LED-8242M50	LED-8242M50C	35425				5000K	✓	✓	
LED-8242M HV 270W	LED-8242M40		34415	1000W	270W	EX39 Mogul	4000K	✓	✓	12.5" x 10.2"
	LED-8242M50		35425				5000K	✓	✓	
>80 CRI • 50,000 HOUR RATED LIFE • 5 YEAR WARRANTY										

NEW!

NEW!



ENCLOSED FIXTURE AND BALLAST COMPATIBLE MODELS ONLY



Ballast Compatible – Plug 'n Play TYPE A									
DESCRIPTION	MODEL #	LUMENS	REPLACES	LED POWER	BASE	CCT	cRUs	us	DIMENSIONS
LED-8036M 100W	LED-8036M40-MHBC	11046	Up to 250W	100W	EX39 Mogul	4000K	✓	7.75" x 7.9"	
	LED-8036M57-MHBC	10096				5700K	✓		
LED-8030M 140W	LED-8030M40-MHBC	18619	Up to 400W	140W	EX39 Mogul	4000K	✓	9.5" x 9.1"	
	LED-8030M57-MHBC	17047				5700K	✓		
LED-8032M 140W	LED-8032M40-MHBC	19578	Up to 400W	140W	EX39 Mogul	4000K	✓	9.5" x 9.1"	
	LED-8032M57-MHBC	17892				5700K	✓		
VOLTAGE: MH BALLAST ONLY • >80 CRI • 50,000 HOUR RATED LIFE • 5 YEAR WARRANTY									

LOW BAY



Perfect retrofit for parking garages

Ballast Bypass—Internal Driver

TYPE B

45W LED-8056E

Replaces up to 175W

Edison base



* Design Patent 29/415,685
Utility Patent Pending 13/645,209

45W LED-8056M

Replaces up to 175W

Mogul base



LED panels angled out and down for optimal performance

60W LED-8035E*

Replaces up to 175W

Edison base



Uplight provides ceiling illumination and eliminates cave effect

* Design Patent 29/461,332
Utility Patent Pending 14/035,504

Ballast Compatible—Plug 'n Play

TYPE A

- ▶ Compatible with pulse or probe start magnetic metal halide ballasts
- ▶ Easiest to install—simply screw into existing socket

60W LED-8035E-MHBC

Replaces 175W and 250W

Edison base



SPECIFICATIONS

Ballast Bypass | TYPE B

DESCRIPTION	120-277V	347V	LUMENS	REPLACES	LED POWER	BASE	CCT	UL LISTED	CLASSIFIED	DIMENSIONS
LED-8056E 45W	LED-8056E40-A	LED-8056E40C-A	5334	175W	45W	E26 Edison	4000K	✓		6.9" x 5.7"
	LED-8056E50-A	LED-8056E50C-A	5560				5000K	✓		
LED-8056M 45W	LED-8056M40-A	LED-8056M40C-A	5334	175W	45W	EX39 Mogul	4000K	✓	✓	7.4" x 5.7"
	LED-8056M50-A	LED-8056M50C-A	5560				5000K	✓	✓	
LED-8035E 60W	LED-8035E40-A	LED-8035E40C-A	6684	175W	60W	E26 Edison	4000K	✓		6.1" x 7.8"
	LED-8035E57-A	LED-8035E57C-A	7062				5700K	✓		

>80 CRI • 50,000 HOUR RATED LIFE • 5 YEAR WARRANTY

Ballast Compatible | TYPE A

DESCRIPTION	MODEL #	LUMENS	REPLACES	LED POWER	BASE	CCT		DIMENSIONS
LED-8035E 60W	LED-8035E40-MHBC	5773	Up to 250W	60W	E26 Edison	4000K	✓	6.1" x 7.8"
	LED-8035E57-MHBC	5266				5700K	✓	

VOLTAGE: MH BALLAST ONLY • >80 CRI • 50,000 HOUR RATED LIFE • 5 YEAR WARRANTY



ON ALL MODELS



Check our website for listing status

RECESSED CAN



Ballast Bypass—Internal Driver



30W

LED-8055E

Replaces up to 100W
120° beam angle
Edison base



30W

LED-8055M

Replaces up to 100W
120° beam angle
Mogul base



30W

LED-8054E-G2

Replaces up to 100W
140° beam angle
Edison base
Open Fixture



50W

LED-8045M

Replaces up to 175W
45° beam angle



LED-8045M
Penetrating light—
optimal for high ceilings!



except 8054

SPECIFICATIONS

Ballast Bypass | TYPE B

DESCRIPTION	120-277V	347V	LUMENS	REPLACES	LED POWER	BASE	CCT	UL LISTED	CLASSIFIED UL	DIMENSIONS
LED-8055E 30W	LED-8055E27	LED-8055E27C	2537	100W	30W	E26 Edison	2700K	✓		6" x 4.7"
	LED-8055E42	LED-8055E42C	2841				4200K	✓		
	LED-8055E57	LED-8055E57C	2885				5700K	✓		
LED-8055M 30W	LED-8055M27	LED-8055M27C	2537	100W	30W	E39 Mogul	2700K	✓	✓	6.8" x 4.7"
	LED-8055M42	LED-8055M42C	2841				4200K	✓	✓	
	LED-8055M57	LED-8055M57C	2885				5700K	✓	✓	
LED-8054E-G2 30W (Open Fixture)	LED-8054E27-G2	LED-8054E27C-G2	2500	100W	30W	E26 Edison	2700K	✓		4.2" x 4.9"
	LED-8054E35-G2	LED-8054E35C-G2	3000				3500K	✓		
	LED-8054E40-G2	LED-8054E40C-G2	3000				4000K	✓		
	LED-8054E50-G2	LED-8054E50C-G2	3000				5000K	✓		
LED-8045M 50W	LED-8045M27		3506	175W	50W	E39 Mogul	2700K	✓	✓	7.1" x 4.7"
	LED-8045M42		4341				4200K	✓	✓	
	LED-8045M57		4686				5000K	✓	✓	

>80 CRI • 50,000 HOUR RATED LIFE • 5 YEAR WARRANTY

Ballast Bypass—Internal Driver

TYPE
B

Entirely Frosted Lens

45W

LED-8024E40-F-A

Replaces up to
250W

Edison base



65W

LED-8046M40-F-A

Replaces up to
320W

Mogul base



High-Performance Post Tops

Angled panels and light filters designed to deliver lumens where they are needed most

30W

LED-8144M

Replaces up to 175W
Mogul base



45W

LED-8145M

Replaces up to 250W
Mogul base



65W

LED-8146M

Replaces up to 320W
Mogul base



35W

LED-8033E-A

Replaces up to 175W
Edison base



35W

LED-8033M-A

Replaces up to 175W
Mogul base



45W

LED-8024E-A

Replaces up to 250W
Edison base



45W

LED-8024M-A

Replaces up to 250W
Mogul base



65W

LED-8046M-A

Replaces up to 320W
Mogul base



100W

LED-8027M-A

Replaces up to 400W
Mogul base

POST TOP



High-Performance Post Tops

Maximizes lumen output by aiming light where you want it most.

POST TOP SPECIFICATIONS

Ballast Bypass TYPE B										
DESCRIPTION	120-277V	347V	LUMENS	REPLACES	LED POWER	BASE	CCT	UL LISTED	UL CLASSIFIED	DIMENSIONS
LED-8144M 30W HIGH PERFORMANCE POST TOP	LED-8144M30-A	LED-8144M30C-A	3891	175W	30W	EX39 Mogul	3000K	✓	✓	11.4" x 6.8"
	LED-8144M40-A	LED-8144M40C-A	4164				4000K	✓	✓	
	LED-8144M50-A	LED-8144M50C-A	4161				5000K	✓	✓	
LED-8033E 35W	LED-8033E30-A	LED-8033E30C-A	4239	175W	35W	E26 Edison	3000K	✓		8.3" x 3.3"
	LED-8033E40-A	LED-8033E40C-A	5468				4000K	✓		
	LED-8033E57-A	LED-8033E57C-A	5617				5700K	✓		
LED-8033M 35W	LED-8033M30-A	LED-8033M30C-A	4550	175W	35W	EX39 Mogul	3000K	✓	✓	8.5" x 3.3"
	LED-8033M40-A	LED-8033M40C-A	5237				4000K	✓	✓	
	LED-8033M57-A	LED-8033M57C-A	5237				5700K	✓	✓	
LED-8145M 45W HIGH PERFORMANCE POST TOP	LED-8145M30-A	LED-8145M30C-A	5398	250W	45W	EX39 Mogul	3000K	✓	✓	11.4" x 6.8"
	LED-8145M40-A	LED-8145M40C-A	5511				4000K	✓	✓	
	LED-8145M50-A	LED-8145M50C-A	5494				5000K	✓	✓	
LED-8024E 45W	LED-8024E30-A	LED-8024E30C-A	6062	250W	45W	E26 Edison	3000K	✓		9.6" x 3.3"
	LED-8024E40-A	LED-8024E40C-A	6924				4000K	✓		
	LED-8024E57-A	LED-8024E57C-A	6619				5700K	✓		
LED-8024E 45W FROSTED POST TOP	LED-8024E40-F-A		6232	250W	45W	E26 Edison	4000K	✓		9.6" x 3.3"
LED-8024M 45W	LED-8024M30-A	LED-8024M30C-A	5893	250W	45W	EX39 Mogul	3000K	✓	✓	9.8" x 3.3"
	LED-8024M40-A	LED-8024M40C-A	6930				4000K	✓	✓	
	LED-8024M57-A	LED-8024M57C-A	6632				5700K	✓	✓	
LED-8146M 65W HIGH PERFORMANCE POST TOP	LED-8146M30-A	LED-8146M30C-A	8647	320W	65W	EX39 Mogul	3000K	✓	✓	11.4" x 6.8"
	LED-8146M40-A	LED-8146M40C-A	8715				4000K	✓	✓	
	LED-8146M50-A	LED-8146M50C-A	8865				5000K	✓	✓	
LED-8046M 65W	LED-8046M30-A	LED-8046M30C-A	8450	320W	65W	EX39 Mogul	3000K	✓	✓	11.1" x 4.1"
	LED-8046M40-A	LED-8046M40C-A	9587				4000K	✓	✓	
	LED-8046M57-A	LED-8046M57C-A	9499				5700K	✓	✓	
LED-8046M 65W FROSTED POST TOP	LED-8046M40-F-A		8628	320W	65W	EX39 Mogul	4000K	✓	✓	11.1" x 4.1"
LED-8027M 100W	LED-8027M30-A	LED-8027M30C-A	12486	400W	100W	EX39 Mogul	3000K	✓	✓	11.8" x 4.5"
	LED-8027M40-A	LED-8027M40C-A	14666				4000K	✓	✓	
	LED-8027M57-A	LED-8027M57C-A	14613				5700K	✓	✓	

>80 CRI • 50,000 HOUR RATED LIFE • 5 YEAR WARRANTY

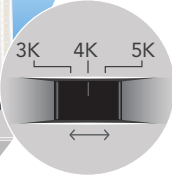
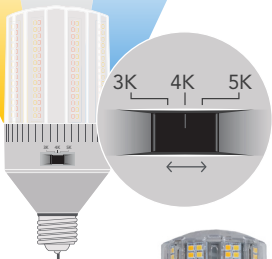




Ballast Bypass—Internal Driver

TYPE
B

3000K 4000K 5000K



Three color temps in one... flexCOLOR

NEW!



11W
LED-8037E
345-A
Replaces up to
50W
Edison base



14W
LED-8038E
345-A
Replaces up to
70W
Edison base



18W
LED-8039E
345-A
Replaces up to
100W
Edison base



18W
LED-8039M
345-A
Replaces up to
100W
Mogul base



24W
LED-8029E
345-A
Replaces up to
150W
Edison base



24W
LED-8029M
345-A
Replaces up to
150W
Mogul base



20W
LED-8017E
Replaces up to
100W (HID)
150W (INC)
Edison base



Dimmable
20W
LED-8017E-DIM
Replaces up to
100W (HID)
150W (INC)
Edison base

NEW!



14W
LED-8015E
Replaces up to
70W (HID)
100W (INC)
Edison base



25W
LED-8018M
Replaces up to
150W (HID)
200W (INC)
Edison base
Mogul base



35W
LED-8019M
Replaces up to
175W (HID)
300W (INC)
Mogul base

INC = INCANDESCENT

SPECIFICATIONS

Ballast Bypass | TYPE B

DESCRIPTION	120-277V	347V	LUMENS	REPLACES	LED POWER	BASE	CCT	UL LISTED	CLASSIFIED	DIMENSIONS
LED-8037E 14W	LED-8037E345-A	LED-8037E345C-A	1550/1610/1650	50W	11W	E26 Edison	3000K/4000K/5000K	✓		5.3" x 2.6"
LED-8038E 14W	LED-8038E345-A	LED-8038E345C-A	1850/1950/1990	70W	14W	E26 Edison	3000K/4000K/5000K	✓		5.3" x 2.6"
LED-8039E 18W	LED-8039E345-A	LED-8039E345C-A	2450/2560/2610	100W	18W	E26 Edison	3000K/4000K/5000K	✓		6.3" x 2.6"
LED-8039M 18W	LED-8039M345-A	LED-8039M345C-A	2450/2560/2610	100W	18W	EX39 Mogul	3000K/4000K/5000K	✓	✓	7" x 2.6"
LED-8029E 24W	LED-8029E345-A	LED-8029E345C-A	3170/3330/3360	150W	24W	E26 Edison	3000K/4000K/5000K	✓		6.6" x 3"
LED-8029M 24W	LED-8029M345-A	LED-8029M345C-A	3170/3330/3360	150W	24W	EX39 Mogul	3000K/4000K/5000K	✓	✓	6.9" x 3"

>80 CRI • 50,000 HOUR RATED LIFE • 5 YEAR WARRANTY

new!

DESCRIPTION	120-277V (NON-DIMMABLE) 120V ONLY (DIMMABLE)	LUMENS	REPLACES	LED POWER	BASE	CCT	ENERGY STAR	DIMENSIONS
LED-8015E 14W	LED-8015E30-G2	1792	70W (HID) 100W (INC)	14W	E26 Edison	3000K	✓	5.3" x 2.6"
	LED-8015E40-G2	1918				4000K	✓	
	LED-8015E50-G2	1960				5000K	✓	
LED-8017E 20W	LED-8017E30-G2	2540	100W (HID) 150W (INC)	20W	E26 Edison	3000K	✓	5.3" x 2.6"
	LED-8017E40-G2	2720				4000K	✓	
	LED-8017E50-G2	2760				5000K	✓	
LED-8017E 20W-DIM*	LED-8017E30-G2-DIM	2540	100W (HID) 150W (INC)	20W	E26 Edison	3000K	✓	5.3" x 2.6"
	LED-8017E40-G2-DIM	2720				4000K	✓	
	LED-8017E50-G2-DIM	2540				5000K	✓	
LED-8018E 25W	LED-8018E30-G2	3375	150W (HID) 200W (INC)	25W	E26 Edison	3000K	✓	6.3" x 3.2"
	LED-8018E40-G2	3525				4000K	✓	
	LED-8018E50-G2	3575				5000K	✓	
LED-8018M 25W	LED-8018M30-G2	3375	150W (HID) 200W (INC)	25W	EX39 Mogul	3000K		6.7" x 3.2"
	LED-8018M40-G2	3525				4000K		
	LED-8018M50-G2	3575				5000K		
LED-8019M 35W	LED-8019M30-G2	4400	175W (HID) 300W (INC)	35W	EX39 Mogul	3000K		6.9" x 3.7"
	LED-8019M30-G2	4400				4000K		
	LED-8019M30-G2	4690				5000K		

>80 CRI • E26 = 25,000 HOUR RATED LIFE / EX39 = 50,000 HOUR RATED LIFE • 5 YEAR WARRANTY

new!



8029 only

 E26 = 25,000 HOUR LIFE
EX39 = 50,000 HOUR LIFE

 THIS APPLIES TO THE NEW
A21/A23 LAMPS ONLY.

 INC = INCANDESCENT
* 120V ONLY



Unique Lighting Solution Saves Time & Money

two kelvin temperatures
to choose from—
2200K or 4000K

- ▶ 20W, 35W, 60W and 100W models replacing up to 180W LPS SOX lamps
- ▶ Advanced active cooling provides excellent thermal management resulting in high light output and long life
- ▶ Directional light output delivers superior dark sky performance
- ▶ USA designed and specified internal LED driver
- ▶ Innovative aluminum heat sink with size options to fill entire fixture
- ▶ Support harness included



SPECIFICATIONS

Ballast Bypass – Internal Driver TYPE B								
DESCRIPTION	MODEL #	LUMENS	REPLACES	LED POWER	BASE	CCT	US	DIMENSIONS
12" SOX 20W	LED-8100-22K	2030	35W	20W	B22	2200K	✓	12.1" x 2.7"
	LED-8100-40K	3022				4000K	✓	
16" SOX 35W	LED-8101-22K	3232	55W	35W	B22	2200K	✓	16.7" x 2.7"
	LED-8101-40K	5156				4000K	✓	
20" SOX 60W	LED-8102-22K	5769	90W	60W	B22	2200K	✓	20.5" x 2.7"
	LED-8102-40K	8198				4000K	✓	
43" SOX 100W	LED-8104-22K	11576	180W	100W	B22	2200K	✓	43.5" x 2.7"
	LED-8104-40K	15472				4000K	✓	

VOLTAGE: 120-277VAC • >80 CRI • 50,000 HOUR RATED LIFE • 5 YEAR WARRANTY

ALL SIZES AVAILABLE IN AMBER VIA SPECIAL ORDER

Ballast Bypass—Internal Driver



Perfect retrofit for hazardous locations such as:

- Nuclear Reactor Sites
- Wastewater Treatment Plants
- Oil Refineries
- Oil Rigs
- Mine Tunnels

All models feature top-mounted LEDs



24W
LED-8929M-HAZ

Replaces up to 150W

Mogul base



24W
LED-8929E-HAZ

Replaces up to 150W

Edison base

Approved for **Hazardous Location: Class 1, Division 2**
See our website for a list of approved fixtures



SPECIFICATIONS

DESCRIPTION	120-277V	347V	LUMENS	REPLACES	LED POWER	BASE	CCT	UL LISTED	CLASSIFIED	DIMENSIONS
LED-8929E 24W	LED-8929E57-HAZ	LED-8929E57C-HAZ	3400	150W	24W	E26 Edison	5700K	✓		6.75" x 2.9"
LED-8929M 24W	LED-8929M57-HAZ	LED-8929M57C-HAZ	3400	150W	24W	EX39 Mogul	5700K	✓	✓	7" x 2.9"

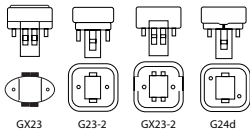
>80 CRI • 50,000 HOUR RATED LIFE • 5 YEAR WARRANTY



Our latest pin-based LED retrofits are perfect for PL applications, and provide a long-lasting LED alternative for walls or recessed areas in offices, hotels, lobbies, schools, etc.

2-PIN

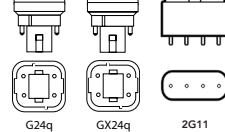
Compatible bases



OR

4-PIN

Compatible bases



HORIZONTAL

OMNI-DIRECTIONAL

VERTICAL



7W
LED-7311

Replaces up to 13W
G23-2 base

7W
LED-7312

Replaces up to 13W
GX23-2 base

7W
LED-7322

Replaces up to 26W
G24d base

NEW!
11W
LED-7324-G3

Replaces up to 42W
G/GX24q base

11W
LED-7334

Replaces up to 26W
G/GX24q base



5W
LED-7300
Replaces up to 13W
GX23 base



10W **NEW!**
LED-7320-G3
Replaces up to 42W
G/GX24q base



10W
LED-7330
Replaces up to 26W
G/GX24q base

Type B Only



23W
LED-7340
Replaces up to 42W
2G11 base



7W **NEW!**
LED-7310-G3
Replaces up to 32W
G24d/q base



25W
LED-7342
Replaces up to 42W
G24q base



12W
LED-7318
Replaces up to 26W
G/GX24q base



12W
LED-7338
Replaces up to 26W
G/GX24q base

Type A = Ballast Compatible
Type A/B = Ballast Bypass 120-277V or Ballast Compatible
Type B = Ballast Bypass

telescoping horizontal & fixed vertical adapter included w/ each lamp



Also Available
LED-7319
Extender for 7318 and 7338

SPECIFICATIONS

DESCRIPTION	MODEL #	LUMENS	REPLACES	LED POWER	BASE	BEAM ANGLE	CCT	DIMENSIONS
LED-7300 5W 2-PIN UNIVERSAL / TYPE A+B	LED-7300-27K-G2	500	13W	5W	GX23	360°	2700K	5.5" x 1.4"
	LED-7300-35K-G2	550					3500K	
	LED-7300-40K-G2	550					4000K	
	LED-7300-50K-G2						5000K	
LED-7310 5W 2-PIN UNIVERSAL / TYPE B	LED-7310-27K-G3	890	32W	7W	G24d/q	360°	2700K	
	LED-7310-35K-G3	949					3500K	
	LED-7310-40K-G3	970					4000K	
	LED-7310-50K-G3	990					5000K	
LED-7311 7W 2-PIN UNIVERSAL / TYPE A+B	LED-7311-27K-G3	815	13W	7W	G23-2	120°	2700K	5.8" x 1.4"
	LED-7311-35K-G3	883					3500K	
	LED-7311-40K-G3	892					4000K	
	LED-7311-50K-G3						5000K	
LED-7312 7W 2-PIN UNIVERSAL / TYPE A+B	LED-7312-27K-G3	801	13W	7W	GX23-2	120°	2700K	5.8" x 1.4"
	LED-7312-35K-G3	899					3500K	
	LED-7312-40K-G3	914					4000K	
	LED-7312-50K-G3						5000K	
LED-7318 12W 4-PIN UNIVERSAL / TYPE A+B	LED-7318-27K-A	837	26W	12W	G/GX24q	120°	2700K	3.8" x 3"
	LED-7318-35K-A	1157					3500K	
	LED-7318-40K-A	1198					4000K	
LED-7319 12W 4-PIN UNIVERSAL / TYPE A+B	LED-7319	Extender for 7318 and 7338		G24q/d				
LED-7320 10W 4-PIN UNIVERSAL / TYPE A+B	LED-7320-27K-G3	1350	42W	10W	G/GX24q	360°	2700K	7" x 1.4"
	LED-7320-35K-G3	1550					3500K	
	LED-7320-40K-G3	1600					4000K	
	LED-7320-50K-G3	1635					5000K	
LED-7322 7W 2-PIN UNIVERSAL / TYPE A+B	LED-7322-27K-G3	849	26W	7W	G24d	120°	2700K	5.8" x 1.4"
	LED-7322-35K-G32	869					3500K	
	LED-7322-40K-G3	887					4000K	
	LED-7322-50K-G3						5000K	
LED-7324 11W 4-PIN UNIVERSAL / TYPE A+B	LED-7324-27K-G3	1050	42W	11W	G/GX24q	360°	2700K	5.6" x 1.3"
	LED-7324-35K-G3	1125					3500K	
	LED-7324-40K-G3	1200					4000K	
	LED-7324-50K-G3	1200					5000K	
LED-7330 10W 4-PIN BALLAST COMPATIBLE / TYPE A	LED-7330-27K-G2	760	26W	10W	G/GX24q	360°	2700K	6.2" x 1.4"
	LED-7330-35K-G2	850					3500K	
	LED-7330-40K-G2	916					4000K	
LED-7334 11W 4-PIN BALLAST COMPATIBLE / TYPE A	LED-7334-27K-G2	974	26W	11W	G/GX24q	120°	2700K	5.8" x 1.4"
	LED-7334-35K-G2	1057					3500K	
	LED-7334-40K-G2	1014					4000K	
LED-7338 12W 4-PIN BALLAST COMPATIBLE / TYPE A	LED-7338-27K-A	1100	26W	12W	G/GX24q	120°	2700K	3.8" x 3"
	LED-7338-35K-A	1100					3500K	
	LED-7338-40K-A	1100					4000K	
LED-7340 23W 4-PIN BALLAST BYPASS / TYPE B	LED-7340-30K-G2	2100	40W	17W	2G11	160°	42W	22" x 1.6"
	LED-7340-35K-G2	2100					42W	
	LED-7340-40K-G2	2200					42W	
LED-7342 25W 4-PIN BALLAST BYPASS / TYPE B	LED-7342-27K-G2	2000	42W	25W	G24q	140°	2700K	4.2" x 3.6"
	LED-7342-35K-G2	2500					3500K	
	LED-7342-40K-G2	2500					4000K	
LED-7356-SP 40W PAR 56 LAMP	LED-7356-SP30	3500	300W	40W	GX16d	15°	3000K	7" x 7" x 5"
	LED-7356-SP40						4000K	8" x 7" x 5"
	LED-7356-SP50						5000K	9" x 7" x 5"
LED-7356-NF 25W PAR 56 LAMP	LED-7356-NF30	3500	300W	40W	GX16d	25°	3000K	10" x 7" x 5"
	LED-7356-NF40						4000K	11" x 7" x 5"
	LED-7356-NF50						5000K	12" x 7" x 5"
LED-7356-FL 25W PAR 56 LAMP	LED-7356-FL30	3500	300W	40W	GX16d	40°	3000K	13" x 7" x 5"
	LED-7356-FL40						4000K	14" x 7" x 5"
	LED-7356-FL50						5000K	15" x 7" x 5"

VOLTAGE: 120-277VAC • -80CRI • 50,000 HOUR RATED LIFE • 5 YEAR WARRANTY

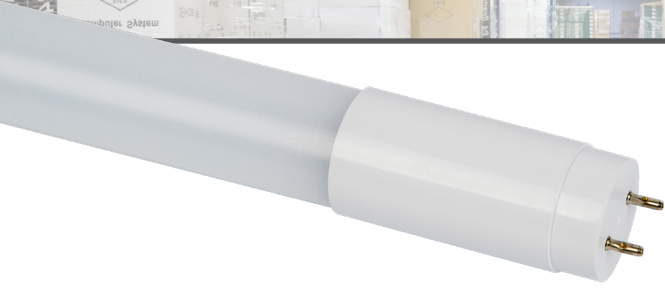


- PAR 56 LAMPS**
- ▶ Available in three different beam angles – Spot, Narrow Flood and Flood
 - ▶ Forward-phase, line voltage dimmable
 - ▶ Suitable for damp locations

40W
LED-7356-SP
LED-7356-NF
LED-7356-FL
Replaces up to 300W Halogen
GX16d base



LINEAR T8



Energy-Saving Replacement
for Fluorescent T8

Ballast Compatible* & Line Voltage **TYPE A+B**

2 METHODS OF INSTALLATION

- UL Type A: plug & play compatible with almost all fluorescent ballasts (see ballast compatibility guide for more details).
- UL Type B Double-End 120-277V: ballast bypass installation using non-shunted or shunted sockets with power applied to both ends of the tube.



SHUNTED



NON SHUNTED

SPECIFICATIONS

Ballast Compatible* & LINE VOLTAGE | TYPE A+B

DESCRIPTION	MODEL #	LUMENS	REPLACES	LED POWER	BASE	CCT	UL LISTED	DIMENSIONS
2' T8 - 10W	RPT-B-TOTALTUBE-T8-G3 2FT-835-A	1350	17WL	10W	G13 Bi-Pin	3500K	✓	1" x 24"
2' T8 - 10W	RPT-B-TOTALTUBE-T8-G3 2FT-840-A	1350	17W	10W	G13 Bi-Pin	4000K	✓	1" x 24"
2' T8 - 10W	RPT-B-TOTALTUBE-T8-G3 2FT-850-A	1350	17W	10W	G13 Bi-Pin	5000K	✓	1" x 24"
3' T8 - 10W	RPT-B-TOTALTUBE-T8-G3 3FT-835-A	1350	25W	10W	G13 Bi-Pin	3500K	✓	1" x 36"
3' T8 - 10W	RPT-B-TOTALTUBE-T8-G3 3FT-840-A	1350	25W	10W	G13 Bi-Pin	4000K	✓	1" x 36"
3' T8 - 10W	RPT-B-TOTALTUBE-T8-G3 3FT-850-A	1350	25W	10W	G13 Bi-Pin	5000K	✓	1" x 36"
4' T8 - 12W	RPT-B-TOTALTUBE-T8-G3 4FT-835-A	1620	32W	12W	G13 Bi-Pin	3500K	✓	1" x 48"
4' T8 - 12W	RPT-B-TOTALTUBE-T8-G3 4FT-840-A	1620	32W	12W	G13 Bi-Pin	4000K	✓	1" x 48"
4' T8 - 12W	RPT-B-TOTALTUBE-T8-G3 4FT-850-A	1620	32W	12W	G13 Bi-Pin	5000K	✓	1" x 48"
4' T8 HO - 15W	RPT-B-TOTALTUBE-T8-G3 4FTHO-835-A	2025	32W	15W	G13 Bi-Pin	3500K	✓	1" x 48"
4' T8 HO - 15W	RPT-B-TOTALTUBE-T8-G3 4FTHO-840-A	2025	32W	15W	G13 Bi-Pin	4000K	✓	1" x 48"
4' T8 HO - 15W	RPT-B-TOTALTUBE-T8-G3 4FTHO-850-A	2025	32W	15W	G13 Bi-Pin	5000K	✓	1" x 48"
2' T8 - UBEND - 15W	RPT-B-TOTALTUBE-T8-G3 2FTU1-835-A	1950	32W	15W	G13 Bi-Pin	3500K	✓	2" x 24"
2' T8 - UBEND - 15W	RPT-B-TOTALTUBE-T8-G3 2FTU1-840-A	1950	32W	15W	G13 Bi-Pin	4000K	✓	2" x 24"
2' T8 - UBEND - 15W	RPT-B-TOTALTUBE-T8-G3 2FTU6-835-A	1950	32W	15W	G13 Bi-Pin	3500K	✓	6" x 24"
2' T8 - UBEND - 15W	RPT-B-TOTALTUBE-T8-G3 2FTU6-840-A	1950	32W	15W	G13 Bi-Pin	4000K	✓	6" x 24"

>80 CRI • 100,000 HOUR RATED LIFE • 5 YEAR WARRANTY

* Refer to ballast compatibility list on led-llc.com

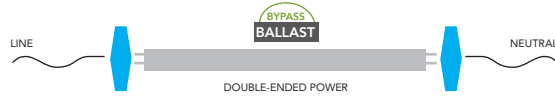


Ballast Bypass—Internal Driver

TYPE B

Double-ended Power

Shunted or non-shunted lamp holder



Ballast Bypass – Internal Driver | TYPE B | DOUBLE-ENDED POWER

DESCRIPTION	MODEL #	LUMENS	REPLACES	LED POWER	BASE	CCT	UL LISTED	DIMENSIONS
2' T8 - 9W	LED-9T8-835DE24-G3	1100	17W	9W	G13	3500K	✓	23.7" x 1.1"
2' T8 - 9W	LED-9T8-840DE24-G3	1150	17W	9W	G13	4000K	✓	23.7" x 1.1"
2' T8 - 9W	LED-9T8-850DE24-G3	1150	17W	9W	G13	5000K	✓	23.7" x 1.1"
3' T8 - 12W	LED-12T8-835DE36-G3	1400	25W	12W	G13	3500K	✓	35.7" x 1.1"
3' T8 - 12W	LED-12T8-840DE36-G3	1450	25W	12W	G13	4000K	✓	35.7" x 1.1"
3' T8 - 12W	LED-12T8-850DE36-G3	1450	25W	12W	G13	5000K	✓	35.7" x 1.1"
4' T8 - 12W	LED-12T8-835DE48-G3	1700	32W	12W	G13	3500K	✓	47.7" x 1.1"
4' T8 - 12W	LED-12T8-840DE48-G3	1800	32W	12W	G13	4000K	✓	47.7" x 1.1"
4' T8 - 12W	LED-12T8-850DE48-G3	1800	32W	12W	G13	5000K	✓	47.7" x 1.1"
4' T8 - 15W	LED-15T8-835DE48-G3	2100	32W	15W	G13	3500K	✓	47.7" x 1.1"
4' T8 - 15W	LED-15T8-840DE48-G3	2200	32W	15W	G13	4000K	✓	47.7" x 1.1"
4' T8 - 15W	LED-15T8-850DE48-G3	2200	32W	15W	G13	5000K	✓	47.7" x 1.1"
8' T8 - 42W	LED-42T82P-840DE96-G4	5040	86W	42W	FA8	4000K	✓	
8' T8 - 42W	LED-42T82P-850DE96-G4	5040	86W	42W	FA8	5000K	✓	
DOUBLE END RECESSED END CAP	LED-R17D-ENDCAP	NA	NA	NA	NA	NA		
4' T5 HO - 25W	LED-25T5HO-835DE48-G3	3300	54W	25W	G5	3500K	✓	47.7" x 1.0"
4' T5 HO - 25W	LED-25T5HO-840DE48-G3	3500	54W	25W	G5	4000K	✓	47.7" x 1.0"
4' T5 HO - 25W	LED-25T5HO-850DE48-G3	3500	54W	25W	G5	5000K	✓	47.7" x 1.0"



Ballast Bypass—Internal Driver

TYPE B

Single-ended Power | Non-shunted lamp holder



Ballast Bypass – Internal Driver | TYPE B | SINGLE-ENDED POWER

DESCRIPTION	MODEL #	LUMENS	REPLACES	LED POWER	BASE	CCT	UL LISTED	DIMENSIONS
4' T8 - 18W	LED-18T8-840SE48-G3	2200	32W	18W	G13	4000K	✓	47.7" x 1.0"
4' T8 - 18W	LED-18T8-850SE48-G3	2200	32W	18W	G13	5000K	✓	47.7" x 1.0"
2' T8U6-15W	LED-18U6-835SE-G3	2100	32W	18W	2G13	3500	✓	22.5" x 7.0" x 1.1"
2' T8U6-15W	LED-18U6-840SE-G3	2200	32W	18W	2G13	4000	✓	22.5" x 7.0" x 1.1"
2' T8U6-15W	LED-18U6-850SE-G3	2200	32W	18W	2G13	5000	✓	22.5" x 7.0" x 1.1"

INTRODUCING...

RemPhos by Light Efficient Design

We're bringing a new species of lighting to the Light Efficient Design family of LED products. With a focus on innovation and thoughtful LED lighting, our new RemPhos product offering enhances our commitment to *Powering the Switch to LED...ALL WAYS.*

Our newest line of LED retrofit kits and fixtures includes products featuring RemPhos innovative "FLEX" technologies.

flexCOLOR
choose from 3 different
color temperatures

flexWATT
4 wattages
in one product

flexCONTROL
order without controls,
basic or advanced control

One piece design. Easy Install.

1st to market to have the ability to be installed as a retrofit kit or as a new fixture



NEW!

2x2, 1x4, 2x4
RP-TTV (Volumetric)
16W-28W, 20W-40W
3500°K, 4000°K, 5000°K

- ▶ is a door style retrofit kit with just one piece, creating a seamless, no air gap look
- ▶ you can choose from a volumetric or a flat panel design



NEW!

2x2, 1x4, 2x4
RP-TTF (Flat Panel)
16W-28W, 20W-40W
3500°K, 4000°K, 5000°K

10
YEAR
WARRANTY

TROFFER TRANSFORMER SPECIFICATIONS

NEW!

NEW!

PRODUCT	DESCRIPTION	RemPhos DLC Part #	LUMENS (FLEX)	WATT (FLEX)	CCT OPTIONS	CONTROLLER/OCCUPANCY SENSOR	ETL	RECS	DIMENSIONS
RP-TTV-G1	2x2 Troffer Transformer Volumetric	RP-TTV-G1-2X2-20L-840-FWFC	2032	16W (16-28W)	3500/4000/5000K	OPTIONAL	✓	✓	23.75" x 23.75"
	1x4 Troffer Transformer Volumetric	RP-TTV-G1-1X4-20L-840-FWFC	2480	20W (16-28W)	3500/4000/5000K	OPTIONAL	✓	✓	11.75" x 47.75"
	2x4 Troffer Transformer Volumetric	RP-TTV-G1-2X4-20L-840-FWFC	3390	26W (20-40W)	3500/4000/5000K	OPTIONAL	✓	✓	23.75" x 47.75"
RP-TTF-G1	2x2 Troffer Transformer Flat Panel	RP-TTF-G1-2X2-20L-840-FWFC	2032	16W (16-28W)	3500/4000/5000K	OPTIONAL	✓	✓	23.75" x 23.75"
	1x4 Troffer Transformer Flat Panel	RP-TTF-G1-1X4-20L-840-FWFC	2480	20W (16-28W)	3500/4000/5000K	OPTIONAL	✓	✓	11.75" x 47.75"
	2x4 Troffer Transformer Flat Panel	RP-TTF-G1-2X4-20L-840-FWFC	3390	26W (20-40W)	3500/4000/5000K	OPTIONAL	✓	✓	23.75" x 47.75"

VOLTAGE: 120-277VAC • 85 CRI • 100,000 HOUR RATED LIFE • 10 YEAR WARRANTY

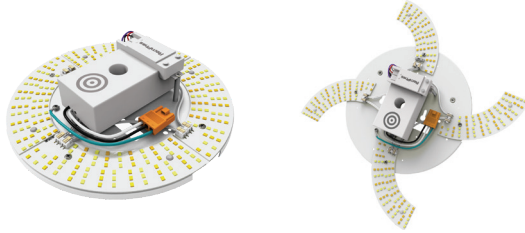
Default lumen package (wattage and CCT) are shown above in bold. There are two ways to achieve a non-default lumen package and/or CCT:
1. You can easily adjust in field via our FlexWatt and FlexColor internal switches. 2. Have us adjust the FlexWatt and FlexColor at the factory for an additional charge.

5 styles. 4 lumen packages. 3 color temperatures. 2 control options.
1 perfect solution for all your drum, linear + sconce retrofit needs.

9IN

LEDCR-G2

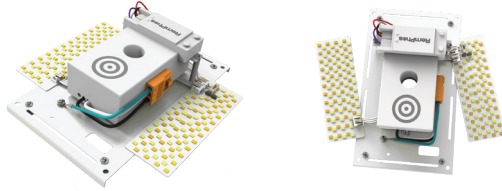
6W, **10W**, 16W, 22W
3000°K, 3500°K, **4000°K**
(expandable LED boards)



4IN

LEDSR-G2

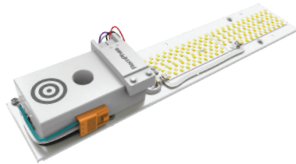
6W, 10W, 12W, 15W
3000°K, 3500°K, **4000°K**
(expandable LED boards)



14INE

LEDSR-G2

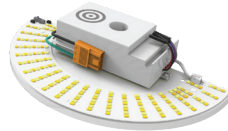
6W, 10W, 12W, 15W
3000°K, 3500°K, **4000°K**
(fixed LED boards)



9IN

LEDSR-G2

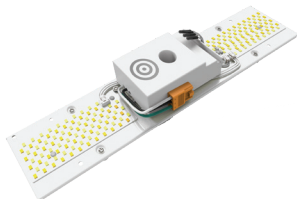
6W, 10W, 12W, 15W
3000°K, 3500°K, **4000°K**
(fixed LED boards)



14INM

LEDSR-G2

6W, 10W, 12W, 15W
3000°K, 3500°K, **4000°K**
(fixed LED boards)



Optional integrated high/low motion and daylight sensor. Completely adjustable and hidden behind the fixture lens

Retrofit these fixtures & more



SURFACE MOUNTS



VANITIES/LINEARS



WALL MOUNTS

DRUM/SCNCE/VANITY RETROFIT SPECIFICATIONS

PRODUCT	DESCRIPTION	RemPhos DLC Part #	LUMENS (FLEX)	WATT (FLEX)	CCT OPTIONS	CONTROLLER/OCCUPANCY SENSOR	ETL	ENERGY STAR	DIMENSIONS
LEDCR-G2 10W	9" Circular Drum Retrofit	RPT-P-LEDCR-G2-9IN-14L-840-FWFC	1370 (780-3124)	10W (6-22W)	3000/3500/4000K	NO	✓	✓	8.7" x 8.7" x 2"
	9" Circular Drum Retrofit w/Occ Sensor	RPT-P-LEDCR-G2-9IN-14L-840-FWFC-OCC	1370 (780-3124)	10W (6-22W)	3000/3500/4000K	YES	✓	✓	8.7" x 8.7" x 2"
LEDSR-G2 6W	4" Sconce Retrofit	RPT-P-LEDSR-G2-4IN-8L-840-FWFC	816 (780-2130)	6W (6-15W)	3000/3500/4000K	NO	✓	✓	6.5" x 7" x 2.1"
	4" Sconce Retrofit w/Occ Sensor	RPT-P-LEDSR-G2-4IN-8L-840-FWFC-OCC	816 (780-2130)	6W (6-15W)	3000/3500/4000K	YES	✓	✓	6.5" x 7" x 2.1"
	9" Sconce Retrofit	RPT-P-LEDSR-G2-9IN-8L-840-FWFC	816 (780-2130)	6W (6-15W)	3000/3500/4000K	NO	✓	✓	8.7" x 4.5" x 2"
	9" Sconce Retrofit w/Occ Sensor	RPT-P-LEDSR-G2-9IN-8L-840-FWFC-OCC	816 (780-2130)	6W (6-15W)	3000/3500/4000K	YES	✓	✓	8.7" x 4.5" x 2"
	14" Vanity Retrofit (End Mnt Drv)	RPT-P-LEDSR-G2-14INE-8L-840-FWFC	816 (780-2130)	6W (6-15W)	3000/3500/4000K	NO	✓	✓	14" x 2.7" x 2.1"
	14" Vanity Retrofit (End Mnt Drv) w/Occ Sensor	RPT-P-LEDSR-G2-14INE-8L-840-FWFC-OCC	816 (780-2130)	6W (6-15W)	3000/3500/4000K	YES	✓	✓	14" x 2.7" x 2.1"
	14" Vanity Retrofit (Mid Mnt Drv)	RPT-P-LEDSR-G2-14INM-8L-840-FWFC	816 (780-2130)	6W (6-15W)	3000/3500/4000K	NO	✓	✓	14" x 2.7" x 2.1"
	14" Vanity Retrofit (Mid Mnt Drv) w/Occ Sensor	RPT-P-LEDSR-G2-14INM-8L-840-FWFC-OCC	816 (780-2130)	6W (6-15W)	3000/3500/4000K	YES	✓	✓	14" x 2.7" x 2.1"

VOLTAGE: 120-277VAC • 85 CRI • 100,000 HOUR RATED LIFE • 10 YEAR WARRANTY



Default lumen package (wattage and CCT) are shown above in bold. There are two ways to achieve a non-default lumen package and/or CCT:
1. You can easily adjust in field via our FlexWatt and FlexColor internal switches. 2. Have us adjust the FlexWatt and FlexColor at the factory for an additional charge.

LINEAR BARKITS

Perfect for Linear and general purpose, Strips & Wraps, Troffers, Vapor Tights, Low bay and High bay, Coves and Soffits, Stairwells

One light. Unlimited possibilities.

ETL and DLC listed as both a retrofit kit and a fixture.

available in both
BASE & PRO

INTERNAL
DRIVER

6W-25W
RP-LBI

available in 2ft,
3ft, 4ft lengths

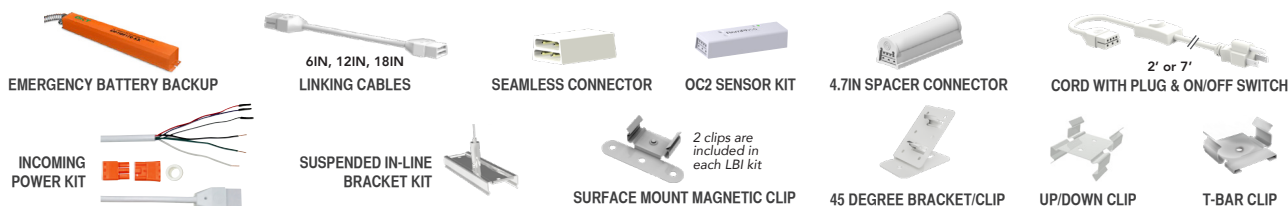
2.5W-20W/per bar
(10W-80W kit)

RPT-BARKITJ

available in 2ft,
3ft, 4ft lengths

EXTERNAL DRIVER

LBI ACCESSORIES (SOLD SEPARATELY UNLESS NOTED OTHERWISE)



LINEAR BARKIT SPECIFICATIONS

PRODUCT	DESCRIPTION	RemPhos DLC Part #	LUMENS (FLEX)	WATT (FLEX)	CCT OPTIONS	ETL US	DIMENSIONS
PRO LED BARKIT INTERNAL DRIVER	2' PRO Internal Drive Light Bar	RP-LBI-G1-2F-6W-40K-WC	780-1560	6W (6-12W)	3500/4000/5000K	✓	1.2" x 1.2" x 19.3"
	2' PRO Warm CCT Internal Drive Light Bar	RP-LBI-G1-2F-6W-27K-WC2	696-1524	6W (6-12W)	2700/3000/3500K	✓	1.2" x 1.2" x 19.3"
	3' PRO Internal Drive Light Bar	RP-LBI-G1-3F-10W-40K-WC	1400-2100	10W (10-15W)	3500/4000/5000K	✓	1.2" x 1.2" x 31.3"
	3' PRO Warm CCT Internal Drive Light Bar	RP-LBI-G1-3F-10W-27K-WC2	1270-1890	10W (10-15W)	2700/3000/3500K	✓	1.2" x 1.2" x 31.3"
	4' PRO Internal Drive Light Bar	RP-LBI-G1-4F-15W-40K-WC	1370-3425	15W (10-25W)	3500/4000/5000K	✓	1.2" x 1.2" x 43.3"
	4' PRO Warm CCT Internal Drive Light Bar	RP-LBI-G1-4F-15W-27K-WC2	1260-3400	15W (10-25W)	2700/3000/3500K	✓	1.2" x 1.2" x 43.3"

VOLTAGE: 120-277VAC • 80+ CRI • 100,000 HOUR RATED LIFE • 10 YEAR WARRANTY

Default lumen package (wattage and CCT) are shown above in bold. There are two ways to achieve a non-default lumen package and/or CCT:

1. You can easily adjust in field via our FlexWatt and FlexColor internal switches. 2. Have us adjust the FlexWatt and FlexColor at the factory for an additional charge.

PRODUCT	DESCRIPTION	RemPhos Part #	LUMENS	WATT	CCT	ETL US	DIMENSIONS
BASE LED BARKIT INTERNAL DRIVER	4' BASE Internal Drive Light Bar	RP-LBI-G1-4F-15W-40K-B	2325	15W	4000	✓	1.2" x 1.2" x 43.3"

VOLTAGE: 120-277VAC • 80+ CRI • 50,000 HOUR RATED LIFE • 5 YEAR WARRANTY

PRODUCT	DESCRIPTION	RemPhos DLC Part #	LUMENS	WATT	CCT OPTIONS	UL LISTED	DIMENSIONS
LED BARKITJ EXTERNAL DRIVER	One 4' Bar & One 15W Driver, LED Bar Kit	RPT-P-LEDBARKITJ-15W-4FT-1L-840	1950	15W	4000	✓	44.4" X 1" X 1"
	Two 4' Bars & One 20W Driver, LED Bar Kit	RPT-P-LEDBARKITJ-30W-4FT-2L-840	3900	30W	4000	✓	44.4" X 1" X 1"
	Three 4' Bars & One 40W Driver, LED Bar Kit	RPT-P-LEDBARKITJ-40W-4FT-3L-840	5200	40W	4000	✓	34.3" X 1" X 1"
	Four 4' Bars & One 60W Driver, LED Bar Kit	RPT-P-LEDBARKITJ-60W-4FT-4L-840	7800	60W	4000	✓	34.3" X 1" X 1"
	One 2' Bar & One 10W Driver, LED Bar Kit	RPT-P-LEDBARKITJ-10W-2FT-1L-840	1300	10W	4000	✓	21.7" X 1" X 1"
	Two 2' Bars & One 20W Driver, LED Bar Kit	RPT-P-LEDBARKITJ-20W-2FT-2L-840	2600	20W	4000	✓	21.7" X 1" X 1"
	90 Min Battery Backup Kit	RPT-ACCESSORY-EMGKIT-HS1-500LM	500	<4W	4000	✓	
	90 Min Battery Backup Kit	RPT-ACCESSORY-EMGKIT-HS1-1000LM	1000	<4W	4000	✓	

VOLTAGE: 120-277VAC • 80+ CRI • 100,000 HOUR RATED LIFE • 10 YEAR WARRANTY

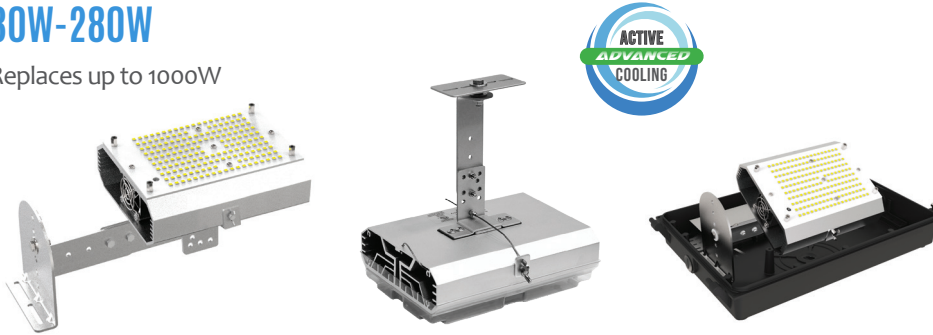
Perfect for High Bays, Floodlights, Wall Packs, Shoe Box

Directional 180° HID Retrofit Kit

This high-power LED Block G3 retrofit module replaces HID, HPS or MH lamps, and comes with our next generation mounting bracket system that can be used in either vertical or horizontal orientation.

30W-280W

Replaces up to 1000W



CHECK OUT THE RPT MODELS BELOW FOR ULTIMATE FLEXIBILITY AND EVEN MORE FEATURES

LEDBLOCK® SPECIFICATIONS

DESCRIPTION	MODEL #	LUMENS	REPLACES	LED POWER	BASE	GCT	ETL US	DIMENSIONS
LED BLOCK KITS	LED-8150-50K	20565	400W	150W	NA	5000K	✓	11.8" x 6.4" x 5.1"
	LED-8280-50K	38765	1000W	280W	NA	5000K	✓	16.9" x 10.5" x 6.1"
	LED-8280-50K-HV (480V)	38765	1000W	280W	NA	5000K	✓	16.9" x 10.5" x 6.1"
VOLTAGE: 120-277VAC • >70 CRI • 50,000 HOUR RATED LIFE • 5 YEAR WARRANTY (LED-8150-8280)								

DESCRIPTION	MODEL #	LUMENS	REPLACES	LED POWER	BASE	GCT	ETL US	DIMENSIONS
RPT BLOCK KITS	RPT-LEDBLOCK-65L-750 -10VDIM-G3	5100	175W	30W	N/A	5000K	✓	4.7" x 4.7"
	RPT-LEDBLOCK-100L-750 -10VDIM-G3	8850	250W	52W	N/A	5000K	✓	4.7" x 4.7"
	RPT-LEDBLOCK-150L-750 -10VDIM-G3	15700	400W	100W	N/A	5000K	✓	5.1" x 6.1"
	RPT-LEDBLOCK-200L-750 -10VDIM-G3	20000	400W	110W	N/A	5000K	✓	5.1" x 6.1"
	RPT-LEDBLOCK-300L-750 -10VDIM-G3	24000	>400W	150W	N/A	5000K	✓	7.9" x 5.9"
	RPT-LEDBLOCK-400L-750 -10VDIM-G3	43000	1000W	277W	N/A	5000K	✓	10.6" x 10"
VOLTAGE: 120-277VAC • >70 CRI • 100,000 HOUR RATED LIFE • 10 YEAR WARRANTY (RPT-LEDBLOCK-G3)								



ACCESSORIES SPECIFICATIONS

DESCRIPTION	MODEL #	TYPE	MAX WATTAGE	INPUT/OUTPUT VOLTAGE	THD	POWER FACTOR	DIMENSIONS
STEP DOWN TRANSFORMERS	MTM04506224C-LW	450VA Stepdown transformer	400W	480/347V in 277V out	3.4% 3.8%	0.99	4.2" x 2.7" x 2.2"
	MTM01606224C-LW	160VA Stepdown transformer	140W	480/347V in 277V out	4.3% 4.1%	0.99	4.2" x 2.0" x 1.6"
	MTM00506224C-LW	50VA Stepdown transformer	45W	480/347V in 240V out	6.2% 6.7%	0.98 0.97	3.0" x 1.7" x 1.4"

Appealing design makes it a perfect fixture for many different applications

- ▶ 1-10V Dimmable
- ▶ Sensor ready; PIR or Microwave
- ▶ Multiple mounting options; surface mount or pendant mount
- ▶ Mounting chains and v-hooks included



NEW! **165W, 300W**
RP-LHB-G2
 Replaces up to 1000W

HIGH BAY LUMINAIRE SPECIFICATIONS

DESCRIPTION	MODEL #	LUMENS	REPLACES	LED POWER	BASE	CCT	UL LISTED	DIMENSIONS
165W LINEAR HIGH BAY FIXTURE	RP-LHB-24-200L-850-G2	20000	400W	165W	NA	5000K	✓	12.6" x 23.8" x 2"
300W LINEAR HIGH BAY FIXTURE	RP-LHB-48-390L-850-G2	40000	1000W	300W	NA	5000K	✓	12.6" x 46" x 2"

VOLTAGE: 120-277VAC • >80 CRI • 50,000 HOUR RATED LIFE • 5 YEAR WARRANTY

PRODUCT	DESCRIPTION	RemPhos Part #
LINEAR HIGH BAY ACCESSORIES	SURFACE MOUNT BRACKET	RP-LHB-SURFMT
	PENDANT MOUNT KIT	RP-LHB-PENDANT
	PIR SENSOR (EXTERNAL)	RP-LHB-PIRSENSOR
	MICROWAVE SENSOR (EXTERNAL)	RP-LHB-MWSENSOR
	BATTERY BACKUP 24W	RP-LHB-BBU24W
	WIRE GUARD FOR 200L	RP-LHB-WIREGUARD-200L
	WIRE GUARD FOR 390L	RP-LHB-WIREGUARD-390L
	EXTERNAL 10KA SURGE ARRESTOR	SPD-277P-10KA-EC1



HIGH TEMPERATURE HIGH BAY

Superior performance in extreme environments. 176°F ambient rating, suitable for foundries, steel mills, smelters and other demanding applications.

150W
RP-HTHB
 Replaces up to 400W HID

DESCRIPTION	MODEL #	LUMENS	REPLACES	LED POWER	VOLTAGE	CCT	UL LISTED	DIMENSIONS
150W HIGH TEMP HIGH BAY	RP-HTHB-21L-50K	>21000	400W	150W	120-277	5000K	✓	22" x 10.2"
150W (HIGH VOLTAGE) HIGH TEMP HIGH BAY	RP-HTHB-21L-50K-HV	>21000	400W	150W	347-480	5000K	✓	22" x 10.2"

70 CRI • 50,000 HOUR RATED LIFE • 5 YEAR WARRANTY

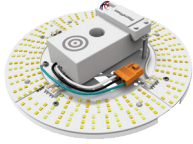
PRODUCT	DESCRIPTION	RemPhos Part #
HIGH TEMP HIGH BAY ACCESSORIES	60° REFLECTOR FOR HIGH TEMP HIGH BAY	RP-HTBH-REFLECTOR-60DEG
	JUNCTION BOX FOR HIGH TEMP HIGH BAY	RP-HTBH-JBOX
	JBOX BRACKET FOR HIGH TEMP HIGH BAY	RP-HTBH-JBOXBRACKET
	TRUNNION BRACKET FOR HIGH TEMP HIGH BAY	RP-HTBH-TRUNBRACKET



CEILING & WALL

Surface mount LED drum & sconce fixtures featuring RemPhos' flexWATT + flexCOLOR + flexCONTROL Technologies.

Powered by the LEDCR G2 Light Engine see page 21

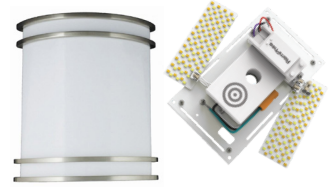


14IN, 18IN
Designer Drum G2
6W, **10W**, 16W, 22W
3000K, 3500K, **4000K**



11IN, 14IN
Utility Drum G2
6W, **10W**, 16W, 22W
3000K, 3500K, **4000K**

Powered by the LEDSR G2 Light Engine see page 21



11IN
Designer Sconce G2
6W, **10W**, 16W, 22W
3000K, 3500K, **4000K**

12IN
Outdoor Drum G2
6W, **10W**, 16W, 22W
3000K, 3500K, **4000K**



13IN
Tough Drum G2
6W, **10W**, 16W, 22W
3000K, 3500K, **4000K**



15IN
Glass Drum G2
6W, **10W**, 16W, 22W
3000K, 3500K, **4000K**



14IN
Base Designer Drum
6W, **10W**, 15W
3000K, 3500K, **4000K**



NEW! Base model drum fixtures – Choose from 2 styles

14IN
Base Utility Drum
6W, **10W**, 15W
3000K, 3500K, **4000K**



Default lumen package (wattage and CCT) are shown above in bold. There are two ways to achieve a non-default lumen package and/or CCT: 1. You can easily adjust in field via our FlexWatt & FlexColor internal switches. 2. Have us adjust the FlexWatt & FlexColor at the factory for an additional charge.

PRODUCT	DESCRIPTION	PART #	LUMENS (FLEX)	WATT (FLEX)	CCT OPTIONS	CONTROLLER/OCCUPANCY SENSOR	ETL	ENERGY STAR	DIMENSIONS
BASE DRUM	14" DESIGNER DRUM	RP-B-DD-14N-10L-840-WC	840 (600-1500)	10W (6-15W)	3000/3500/4000K	NO	✓	✓	TBD
	14" UTILITY DRUM	RP-B-UD-14N-10L-840-WC	840 (600-1500)	10W (6-15W)	3000/3500/4000K	NO	✓	✓	TBD
VOLTAGE: 120-277VAC • >80 CRI • 50,000 HOUR RATED LIFE • 5 YEAR WARRANTY									
LED DRUM	11" Utility Drum Luminaire	RP-DRU-11N-14L-40K-WC-G2-A	1370 (780-3124)	10W (6-22W)	3000/3500/4000K	NO	✓	✓	3.5" x 11"
	11" Utility Drum Luminaire w/OCC Sensor	RP-DRU-11N-14L-40K-WC-G2-OC1-A	1370 (780-3124)	10W (6-22W)	3000/3500/4000K	YES	✓	✓	3.5" x 14"
	14" Utility Drum Luminaire	RP-DRU-14N-14L-40K-WC-G2-A	1370 (780-3124)	10W (6-22W)	3000/3500/4000K	NO	✓	✓	3.5" x 11"
	14" Utility Drum Luminaire w/OCC Sensor	RP-DRU-14N-14L-40K-WC-G2-OC1-A	1370 (780-3124)	10W (6-22W)	3000/3500/4000K	YES	✓	✓	3.5" x 14"
	14" Designer Drum Luminaire	RP-DRD-14N-14L-40K-WC-G2-A	1370 (780-3124)	10W (6-22W)	3000/3500/4000K	NO	✓	✓	3.5" x 14"
	14" Designer Drum Luminaire w/OCC Sensor	RP-DRD-14N-14L-40K-WC-G2-OC1-A	1370 (780-3124)	10W (6-22W)	3000/3500/4000K	YES	✓	✓	3.5" x 14"
	18" Designer Drum Luminaire	RP-DRD-18N-14L-40K-WC-G2-A	1370 (780-3124)	10W (6-22W)	3000/3500/4000K	NO	✓	✓	3.5" x 18"
	18" Designer Drum Luminaire w/OCC Sensor	RP-DRD-18N-14L-40K-WC-G2-OC1-A	1370 (780-3124)	10W (6-22W)	3000/3500/4000K	YES	✓	✓	3.5" x 18"
	12" Outdoor Drum	RP-DRO-12N-14L-40K-WC-G2	1370 (780-3124)	10W (6-22W)	3000/3500/4000K	NO	✓	✓	4" x 12"
	12" Outdoor Drum w/OCC Sensor	RP-DRO-12N-14L-40K-WC-G2-OC1	1370 (780-3124)	10W (6-22W)	3000/3500/4000K	YES	✓	✓	4" x 12"
	13" Tough Drum	RP-DRT-13N-14L-40K-WC-G2	1370 (780-3124)	10W (6-22W)	3000/3500/4000K	NO	✓	✓	3.75" x 13"
	13" Tough Drum w/OCC Sensor	RP-DRT-13N-14L-40K-WC-G2-OC1	1370 (780-3124)	10W (6-22W)	3000/3500/4000K	YES	✓	✓	3.75" x 13"
	15" Glass Drum	RP-DRG-15N-14L-40K-WC-G2	1370 (780-3124)	10W (6-22W)	3000/3500/4000K	NO	✓	✓	7" x 15"
	15" Glass Drum w/OCC Sensor	RP-DRG-15N-14L-40K-WC-G2-OC1	1370 (780-3124)	10W (6-22W)	3000/3500/4000K	YES	✓	✓	7" x 15"
LED SCONCE	11" Utility Sconce Luminaire	RP-SCD-11N-8L-40K-WC-G2	816 (780-2130)	6W (6-22W)	3000/3500/4000K	NO	✓	✓	3.5" x 18"
	11" Utility Sconce Luminaire w/OCC Sensor	RP-SCD-11N-8L-40K-WC-G2-OC1	816 (780-2130)	6W (6-22W)	3000/3500/4000K	YES	✓	✓	3.5" x 18"
VOLTAGE: 120-277VAC • 85 CRI • 100,000 HOUR RATED LIFE • 10 YEAR WARRANTY									

STAIRWELL & CORRIDOR

LED Linear Stairwell & Corridor Fixture featuring RemPhos' FlexWatt + FlexColor + FlexControl + FlexFixture



EXTRA WIDE
6" WIDTH TO COVER
OLD FOOTPRINT

2FT, 3FT, 4FT


LIVC G2

10W-40W

3000K, 3500K, 4000K



LED STAIRWELL/CORRIDOR LUMINAIRE SPECIFICATIONS

PRODUCT	DESCRIPTION	RemPhos DLC Part #	LUMENS (FLEX)	WATT (FLEX)	CCT OPTIONS	CONTROLLER/OCCUPANCY SENSOR		DIMENSIONS
STAIRWELL/ CORRIDOR LUMINAIRE	24" Corridor/Stairway	RPT-P-LIVC-G2-2FT-20L-840-FWFC-R-S1	1994 (1267-4099)	15W (10-30W)	3000/3500/ 4000K	NO	✓	4.2" x 6" x 23"
	24" Corridor/Stairway w/Occ Sensor	RPT-P-LIVC-G2-2FT-20L-840-FWFC-OCC-R-S1	1994 (1267-4099)	15W (10-30W)	3000/3500/ 4000K	YES	✓	4.2" x 6" x 23"
	36" Corridor/Stairway	RPT-P-LIVC-G2-3FT-20L-840-FWFC-R-S1	1994 (1267-4099)	15W (10-30W)	3000/3500/ 4000K	NO	✓	4.2" x 6" x 34"
	36" Corridor/Stairway w/Occ Sensor	RPT-P-LIVC-G2-3FT-20L-840-FWFC-OCC-R-S1	1994 (1267-4099)	15W (10-30W)	3000/3500/ 4000K	YES	✓	4.2" x 6" x 34"
	48" Corridor/Stairway	RPT-P-LIVC-G2-4FT-20L-840-FWFC-R-S1	1994 (1267-5329)	15W (10-40W)	3000/3500/ 4000K	NO	✓	4.2" x 6" x 46"
	48" Corridor/Stairway w/Occ Sensor	RPT-P-LIVC-G2-4FT-20L-840-FWFC-OCC-R-S1	1994 (1267-5329)	15W (10-40W)	3000/3500/ 4000K	YES	✓	4.2" x 6" x 46"

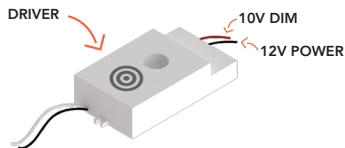
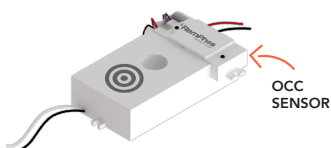

VOLTAGE: 120-277VAC • 85 CRI • 100,000 HOUR RATED LIFE • 10 YEAR WARRANTY

Default lumen package (wattage and CCT) are shown above in bold. There are two ways to achieve a non-default lumen package and/or CCT:
 1. You can easily adjust in field via our FlexWatt and FlexColor internal switches. 2. Have us adjust the FlexWatt and FlexColor at the factory for an additional charge.

flexCOLOR + **flex**WATT
choose from 3 different color temperatures + 4 wattages in one product

+
flexCONTROL
order without controls, basic or advanced control

Control options

<p>CONTROL READY</p>  <p>All LIVC G2 models come standard as factory enabled to add controls at the factory, in the field or at a later date. Driver comes with 10V dimming and 12V DC power wiring.</p>	<p>BASIC CONTROL</p>  <p>Integrated high frequency, high/low motion and daylight hold-off sensor. Can be mounted behind glass or plastic lens. Contact us for more details.</p> <p>ORDERING CODES SENSOR = OCC REMOTE CONTROL = REMOTE-IR12</p>	<p>ADVANCED WIRELESS CONTROL</p>  <p>We partner with Magnum, avi-on, Philips, Lutron and other intelligent wireless lighting control systems. Contact us for more details.</p> <p>CONTACT US FOR ORDERING CODES</p>
--	---	--

+
flexFIXTURE
use as a stairwell, strip, vanity or continuous run fixture

Multiple end cap trims available allowing for the LIVC G2 to be used in so many places!

 <p>SECURITY END CAP White metal end cap transforms LIVC into vandal & tamper resistant fixture RPT-P-LIVC-G2-ENDCAP-SECURITY1</p>	 <p>MODERN1 END CAP Single bar brushed-nickel metal end cap creates a premium elegant look RPT-P-LIVC-G2-ENDCAP-MODERN1</p>	 <p>MODERN2 END CAP Double bar brushed-nickel metal end cap creates a premium elegant look RPT-P-LIVC-G2-ENDCAP-MODERN2</p>
--	---	---

Introducing LumiCleanse – Lighting to Sanitize. Providing a full line of germicidal lighting to hospitals, schools, hotels, senior living centers and more. With health and safety in mind, LumiCleanse products offer safer, cleaner environments for all.

Effectively eliminates these pathogens



BACTERIA



VIRUSES



MOLD/FUNGI

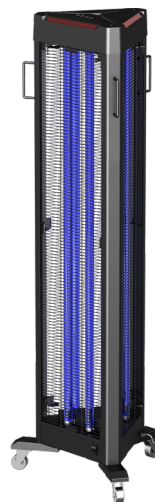


ALLERGENS



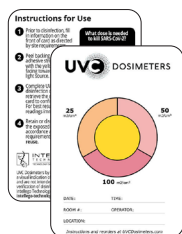
200W **LC-UVC-CART** **NEW!**

- ▶ Mercury & ozone-free
- ▶ Draw-bar handle for easy transport
- ▶ LED adjustable panels for 360° coverage



216W **LC-UVC-TOWER** **NEW!**

- ▶ Up to 2,000 sq. ft. coverage
- ▶ Ozone-free
- ▶ Select from 3 timing options – 30 mins, 60 mins or 120 mins



38W **RP-UVC-LC1** **NEW!**

Integrated motion sensor on base



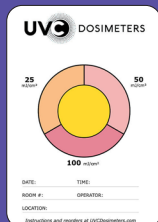
- ▶ Compact design
- ▶ Ozone-free
- ▶ 8' cord with plug for easy set-up
- ▶ Up to 100 sq. ft. coverage

LC-UVC-TRICARD*

Available in packs of 10 cards

* For use only with RP-UVC-LC1 & LC-UVC-TOWER

UV-C DOSIMETER CARDS



- ▶ Easily track & measure UV-C exposure
- ▶ Playing card size
- ▶ For use only with mercury vapor UV-C (250 - 260nm)

DISINFECTANT LIGHT SPECIFICATIONS

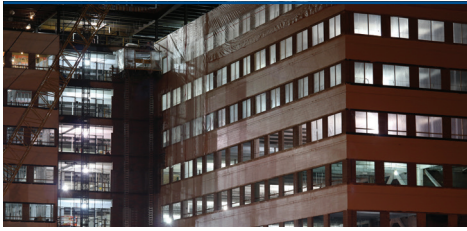
PRODUCT	DESCRIPTION	Part #	WATT	DIMENSIONS
UV-C1	Ultraviolet Germicidal Quartz Lamp	RP-UVC-LC1-38W	38W	7.5" X 17.5"
UV-C-CART	Ultraviolet Germicidal Cart	LC-UVC-CART-200W-01	200W	20" X 40.5" X 12"
UV-C-TOWER	Ultraviolet Germicidal Tower	LC-UVC-TOWER-216W-01	216W	20" X 59" X 14"

VOLTAGE: 120VAC • 1 YEAR WARRANTY

DISINFECTANT LIGHT ACCESSORIES

PRODUCT	DESCRIPTION	Part #
UV-C-DOSIMETERS	Ultraviolet Measurement Cards	LC-UVC-TRICARD-10PK





120V Temporary Work Site Lights!

Super bright and durable, our LED work site lights reduce costs and labor with an integrated power cord and daisy-chain feature.



60W
LED-9006
Replaces up to 250W
20' power cord
Connect up to 10 lights together



100W
LED-9010
Replaces up to 400W
35' power cord
Connect up to 6 lights together



150W
LED-9015
Replaces up to 600W
35' power cord
Connect up to 4 lights together



40W
(8W x 5 lights)
LED-9003
Replaces up to 300W Incandescent
50' string length



100W
LED-9009-5C
Replaces up to 400W
clear lens
10' power cord
Connect up to 6 lights together



100W
LED-9009-5F
Replaces up to 400W
frosted lens
10' power cord
Connect up to 6 lights together



NEW!

80W (8W x 10 lights)
100' string length

LED-9003-163
Replaces up to 600W Incandescent

WORK LIGHTS SPECIFICATIONS

DESCRIPTION	MODEL #	LUMENS	REPLACES	LED POWER	BASE	CCT	UL LISTED	ETL US	DIMENSIONS
WORK LIGHT 5-PACK	LED-9003-50K-5PK	5000	300W	40W (8Wx5)	NA	5000K		✓	3.0" x 4.4"
WORK LIGHT 10-PACK	LED-9003-50K-10PK-163	10000	600W	80W (8Wx10)	NA	5000K		✓	
WORK LIGHT w/20' CORD	LED-9006-50K	6600	250W	60W	NA	5000K	✓		10.8" x 6.5"
WORK LIGHT w/35' CORD	LED-9010-50K	11000	400W	100W	NA	5000K	✓		12.2" x 6.5"
WORK LIGHT w/35' CORD	LED-9015-50K	16500	600W	150W	NA	5000K	✓		13.4" x 6.2"
ECONOMY WORK LIGHT (CLEAR LENS)	LED-9009-100-5C	12000	400W	100W	NA	5000K	✓		11.3" x 6.5"
ECONOMY WORK LIGHT (FROSTED LENS)	LED-9009-100-5F	9500	400W	100W	NA	5000K	✓		11.3" x 6.5"

VOLTAGE: 120 • >80 CRI • 50,000 HOUR RATED LIFE • 5 YEAR WARRANTY*

* LED-9003 is covered by a 3 year warranty.

SOLAR LIGHTS



NEW!

Go completely off-grid or use a combination of solar power & line voltage with our all new 'Solera Hybrid' fixture. All-in-one design, solar panel and battery are built into the LED fixture.

OFF-GRID AREA LIGHT



adjustable solar panel

Completely off-grid

30W
SL-SAL-OG

30W comparable to 250W
Replaceable Battery



7W, 15W
SL-SWL

7W comparable to 50W
15W comparable to 100W



8W, 30W
RP-SAL

8W comparable to 70W
30W comparable to 250W
Replaceable Battery



20W
RP-SFL

20W comparable to 150W
Replaceable Battery

SOLAR SPECIFICATIONS

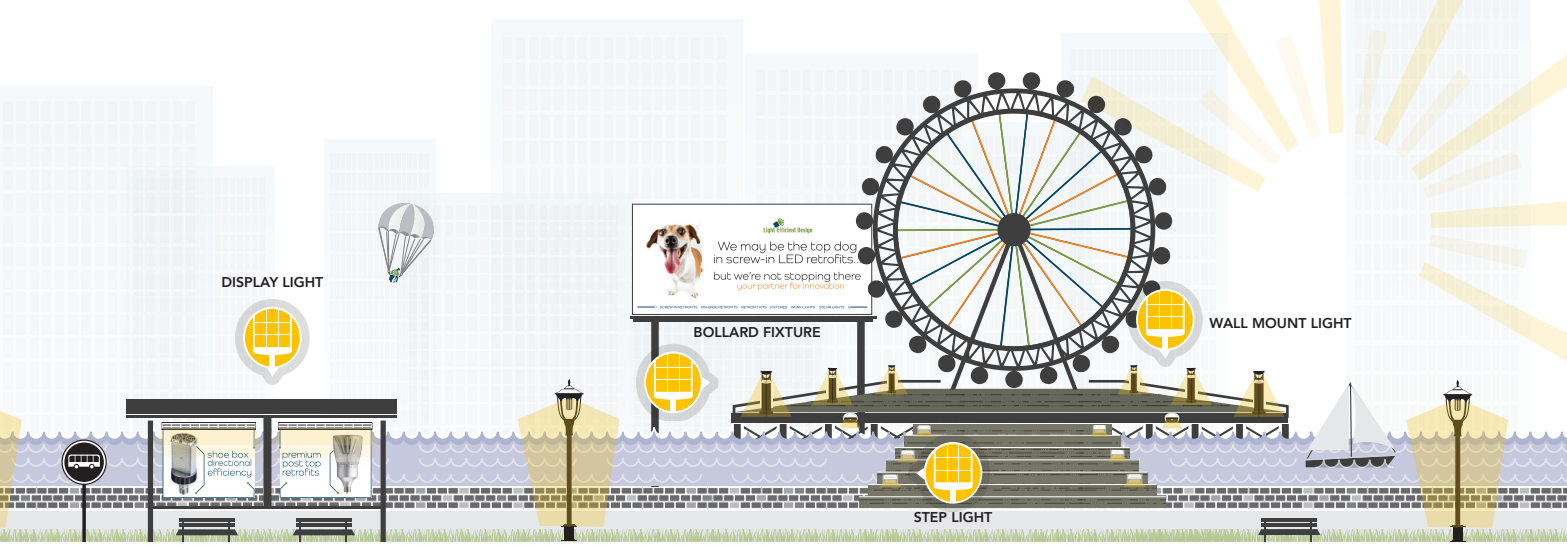
NEW!

DESCRIPTION	RemPhos Part #	LUMENS	COMPARABLE TO	WATT	CCT	DIMENSIONS
30W SOLAR AREA LIGHT	SL-SAL-OG-30W-50K-SF-BK-G1	5900	250W	30W	5000K	25.8" X 10.55" X 3.23"
7W SOLAR WALL PACK	SL-SWL-7W-40K-BK-G1	700	50W	7W	4000K	9.2" X 7.5" X 4"
15W SOLAR WALL PACK	SL-SWL-15W-40K-BK-G1	1500	100W	15W	4000K	12.2" X 10.2" X 5"
8W SOLAR AREA LIGHT	RP-SAL-8W-50K-SF-GY-G1	1000	70W	8W	5000K	20" X 11.6" X 3.3"
30W SOLAR AREA LIGHT	RP-SAL-30W-50K-SF-GY-G1	6000	250W	30W	5000K	36" X 16.7" X 3.7"
20W SOLAR FLOOD LIGHT	RP-SFL-20W-40K-BK-G1	2000	150W	20W	4000K	16.3 - 21.1" X 28.5" X 10.5"
20W SOLAR POST TOP FIXTURE	RP-SPT-20W-40K-SF-G1	2000	150W	20W	4000K	31.8" X 16.4"
20W SOLAR DISPLAY LIGHT	RP-SDL-20W-40K-BK-G1	2000	150W	20W	4000K	3.8" X 3.8" X 46"
2W BOLLARD FIXTURE	RP-SBL-2W-40K-BK-G1	266	30W	2W	4000K	29.9" X 10.2"
1W SOLAR STEP LIGHT	RP-SSL-1W-40K-BK-G1	20	20W	<1W	4000K	7.9" X 4.8" X 2.5"
4W SOLAR WALL MOUNT LIGHT	RP-SML-4W-40K-BK-G1	400	35W	4W	4000K	8.4" X 5.3" X 2.9"

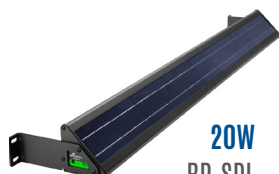
HYBRID SOLAR SPECIFICATIONS

NEW!

DESCRIPTION	RemPhos Part #	LUMENS	COMPARABLE TO	WATT	CCT	DIMENSIONS
30W SOLAR HYBRID AREA LIGHT	SL-SAL-HYB-30W-40K-SF-BK-G1	5900	250W	30W	4000K	25.8" X 10.55" X 3.23"



20W
RP-SPT
20W comparable
to 150W
Replaceable Battery



20W
RP-SDL
20W comparable
to 150W
Replaceable Battery



2W
RP-SBL
2W comparable
to 30W
Replaceable Battery



4W
RP-SML
comparable
to 35W



1W
RP-SSL
comparable
to 20W



30W
SL-SAL-HYB
30W comparable
to 250W
Replaceable Battery

new!

HYBRID SOLAR AREA LIGHT

adjustable solar panel
Powered by the sun and backed-up by line-voltage

SOLAR AREA LIGHT ACCESSORIES

DESCRIPTION	RemPhos Part #
REMOTE (ORDER ONLY IF EXTRA IS NEEDED)	RP-SAL-REMOTE-G1
ROUND POLE BRACKET FOR 8W (FOR SL-SAL)	RP-SAL-BKT-8W-RP-G1
SQUARE POLE BRACKET FOR 8W (FOR SL-SAL)	RP-SAL-BKT-8W-SP-G1
TRUNNION BRACKET FOR 8W (FOR SL-SAL)	RP-SAL-BKT-8W-TN-G1
ROUND POLE BRACKET FOR 30W (FOR SL-SAL)	RP-SAL-BKT-30W-RP-G1
SQUARE POLE BRACKET FOR 30W (FOR SL-SAL)	RP-SAL-BKT-30W-SP-G1
TRUNNION BRACKET FOR 30W (FOR SL-SAL)	RP-SAL-BKT-30W-TN-G1
3" TO 6" POLE MOUNTING (FOR SL-SAL-HYB)	SL-SAL-HYB-BKT-30W-RP-G1
3" TO 6" POLE MOUNTING (FOR SL-SAL-HYB)	SL-SAL-HYB-BKT-30W-SP-G1
3" POLE TENON FOR (FOR SL-SAL-HYB)	SL-SAL-HYB-BKT-30W-TN-3-G1
3" POLE TENON FOR (FOR SL-SAL-HYB)	SL-SAL-HYB-BKT-30W-RT-3-G1
HYBRID WALL MOUNT (FOR SL-SAL-HYB)	SL-SAL-HYB-BKT-30W-WM-G1

ALSO COMPATIBLE W/ SL-SAL-OG MODEL



SAL-REMOTE
motion sensor and time control are programmable via remote



Round Pole Bracket (RP)



Adj. Slip-Filter Bracket (SF)



Square Pole Bracket (SP)



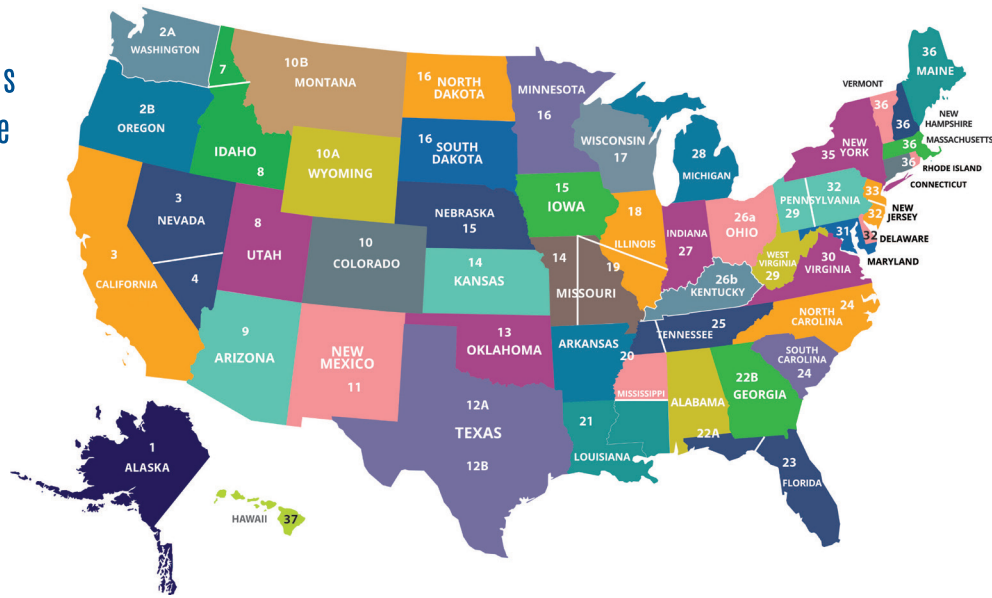
Trunnion Bracket (TN)

INCLUDED W/ QUICK SHIP MODELS

SOLAR DISPLAY LIGHT ACCESSORIES

DESCRIPTION	RemPhos Part #
7.5" LONG ARM BRACKET	RP-SDL-B1L-LB-G1

Find Your Sales Representative



- | | | | |
|--|---|---|---|
| 1 Arctic Sales – AK
907-694-7424 | 11 Mountain States Agency – NM
505-867-5805 | 19 Martin Electrical Sales – E. MO/S. IL
314-966-8659 | 27 New Century Sales – IN
317-334-9697 |
| 2A Taylored Sales & Marketing – WA
503 714-1500 | 12A Electra Sales – N. TX
972-554-8200 | 20 Electra Sales AR – AR/N. MS/W. TN
501-523-4015 | 28 Team Electrical – MI
313-874-1000 |
| 2B Taylored Sales & Marketing – OR
503 714-1500 | 12B ETEL – S. TX
713-678-4460 - Houston
210-829-7153 - San Antonio
512-914-0858 - Austin | 21 SMR Gulf Coast – LA/S. MS
281-774-3751 | 29 Paolicelli & Assoc. – PA/WV
412-276-8816 |
| 3 Sales Lane llc – CA/N. NV
904-404-1670 | 13 Electra Sales – OK
405-543-1924 | 22A IM Sales – AL/FL Panhandle
205-936-8513 | 30 Electrical Sales Assoc. – VA
804-282-1864 |
| 4 Deco Sales – S. NV
702-257-8075 | 14 RB Sales Corp. – KS/W. MO
816-350-1114 | 22B Bishop & Brogdon – GA
404-494-4333 | 31 Colerick – MD/W. DC
410-421-9511 |
| 7 Taylored Sales & Marketing – N. ID
503 714-1500 | 15 RB Sales Corp. – IA/NE/W. IL
319-373-8877 | 23 Gorin Cockrell McCoy – FL
800-241-8657 | 32 Synergy Elec. Sales – E. PA/S. NJ/DE
215-428-1130 |
| 8 Wilson Sales – UT/S. ID
801-292-4867 | 16 Pioneer Sales Group – MN/ND/S.D
763-546-6880 | 24 E.F. Lombardi – NC/SC
704-227-2890 | 33 Ascend Sales & Mktg. – Metro NYC/N. NJ
908-320-0333 |
| 9 Desert Sales – AZ
602-268-7008 | 17 Engineered Rep. Inc. – WI
920-751-3922 | 25 Electrical Sales Assoc. – TN
615-242-2774 | 35 RD Wright – NY North of Westchester
518-966-5980 |
| 10A CT Lighting and Controls – CO/WY
303-762-3537 | 18 Archibald & Meek – IL
630-833-7377 | 26A Riffle & Associate – OH
N. OH - 440-543-8257
S. OH - 513-771-0002 | 36 Lighting for Distributors - LFD Solutions
MA/RI/VT/CT/ME/NH
401-323-3467 |
| 10B Concordia LED – MT
406-899-6073 | | 26B LP Chick – KY
502-964-8181 | 37 Pacific Rim Connections – HI
808-847-0007 |



- | | |
|---|--|
| 1 Alliance Marketing LTD
British Columbia
604-205-5284 | 4 Electrical Sales Network
Ontario
905-795-2525 |
| 2 ElectrixWest Agencies, LTD
Calgary - 403-256-8649
Edmonton - 780-628-5201 | 5 Agence Ricard
Quebec
514-910-8240 |
| 3 Industrial Solutions Network
Saskatchewan/Manitoba
306-242-2599 | 6 Focus Electrical Sales
New Brunswick/Newfoundland
Prince Edward Island
506-852-9333 |

Powering the Switch to LED

Distributed By



LIGHT EFFICIENT DESIGN

Corporate Headquarters • Cary, IL | Innovation & Manufacturing Center • Middleton, MA
847.380.3540 • led-llc.com | sales@led-llc.com